

Operating pressure max. 350 bar/min 100 bar

These double action hydraulic short-stroke cylinders are primarily used for operating double action hydraulic punching, notching and cutting units. Furthermore, they can be used as clamping cylinders. The double action version allows rapid stroke speeds. The cylinders are mounted to the hydraulic punching units with the help of mounting flanges. Adequate mounting flanges available on request.

Technical characteristics

- Optimal piston rod guide; hardened piston rod for protection against corrosion and wear and for better gliding.
- Fine-grinded, polished slide faces for the lip seal and the piston rod improve the service life and the function of the seals.
- Lateral oil ports, additional advance stroke connection on the cylinder base

CUSTOMER DESIGNED MODELS

If you need a special cylinder for your application – customer designed models are available. PLEASE LET US KNOW!

Included accessories

2 x reducing nipples GWR-3/8-1/4 (only 725D80151-1)

Recommended accessories (separate order)

2 x straight screw connectors D8S-R1/4

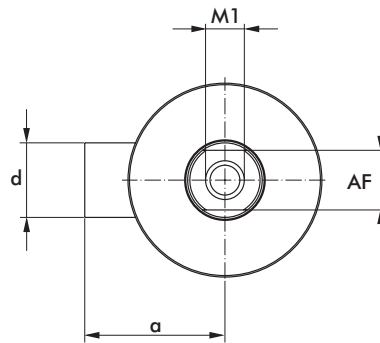
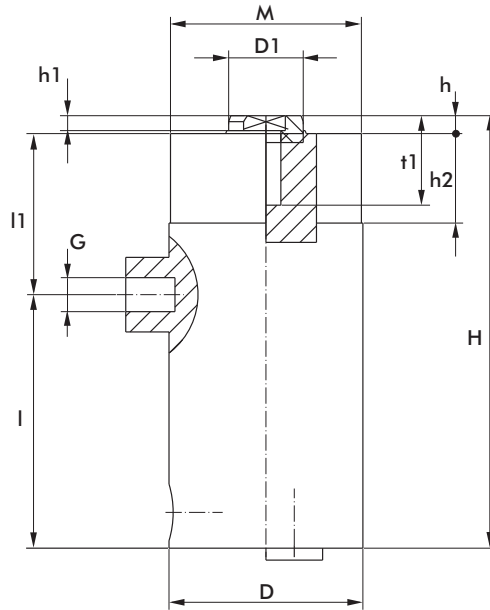
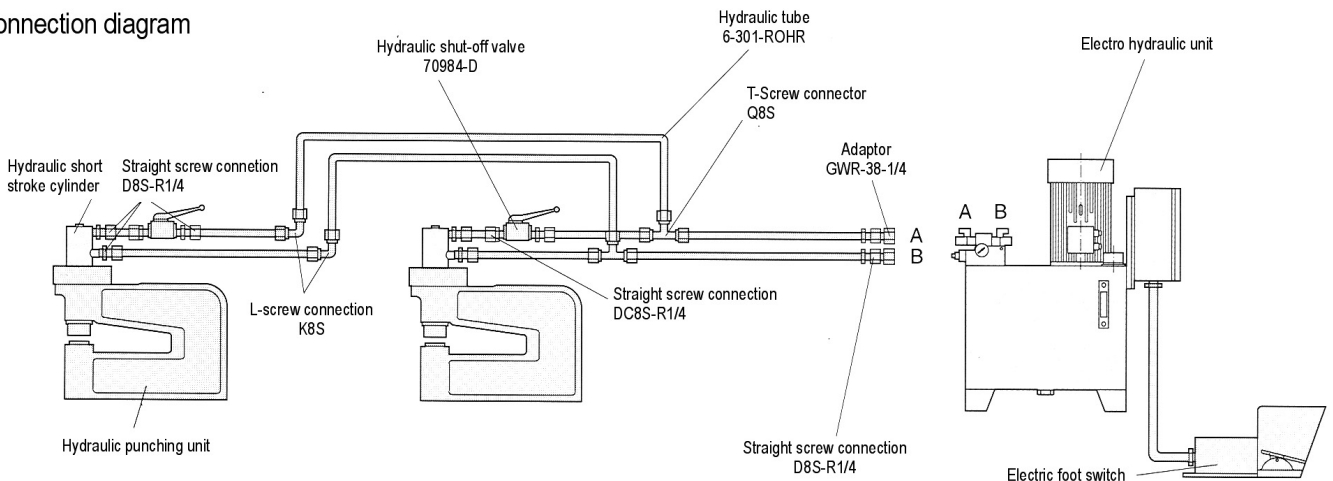
Mounting flange

Grooved or hexagonal nut (see page 20 and 24)



model no.	Clamping force		Repair kit	Piston Stroke*		Piston surface area		Oil consumption/stroke		Connection G	Weight ~ [kg]
	at 100 bar			Ø	S	forward	back	forward	back		
	forward stroke	backstroke		max.	stroke	stroke	stroke	stroke			
	[kN]	[kN]	[mm]	[mm]	[cm ²]	[cm ²]	[cm ³]	[cm ³]	2x		
725D35151-2	9,6	6,5	720V35-0001	35	15	9,62	6,47	14,40	9,70	G1/4	1,9
725D50151-2	19,6	14,7	720V50-0005-2	50	15	19,63	14,72	29,50	22,10	G1/4	3,0
725D63171-1	31,2	22,7	720V63-0001	63	17	31,17	23,13	53,00	39,30	G1/4	4,5
725D80151-1	50,3	37,7	720V80-0001	80	15	50,26	37,69	75,40	56,60	G3/8	10,0

Connection diagram



model no.	[mm]													
	a	d	D	D1	h	hi	h2	H	l	l1	M	M1	AF	t1
725D35151-2	40	25	50	20	9	7	30	159	88	52	M48x1,5	M10	17	25
725D50151-2	-	-	84	25	9	7	30	137	90	47	M64x1,5	M12	20	25
725D63171-1	-	-	97	32	9	7	32	150	96	45	M80x2	M16	27	30
725D80151-1	65	28	105	40	9	7	29,5	183,5	105	72,5	M80x2	M16	36	31