



## Operating pressure max. 350 bar/min 100 bar

These hydraulic screw-in cylinder are double acting. They can be used in clamping fixtures for positioning, clamping and gripping of workpieces. Such cylinder should be used if rapid and precise stroke speeds are required or when high retraction forces are needed.

### Technical characteristics

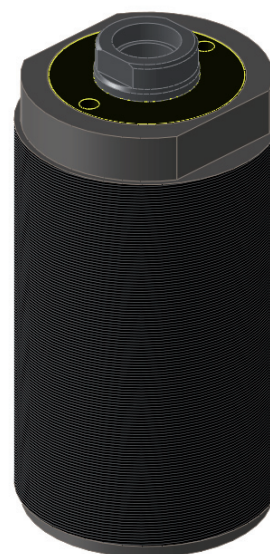
- Hydraulic ports at the cylinder bottom
- External thread along the whole housing
- Glide ring seal with high wear resistance
- No stick-slip-effect
- Double piston-rod seal
- An extended piston rod guide assures high stability when transversal forces occur
- Piston rod with internal thread

### CUSTOMER DESIGNED MODELS

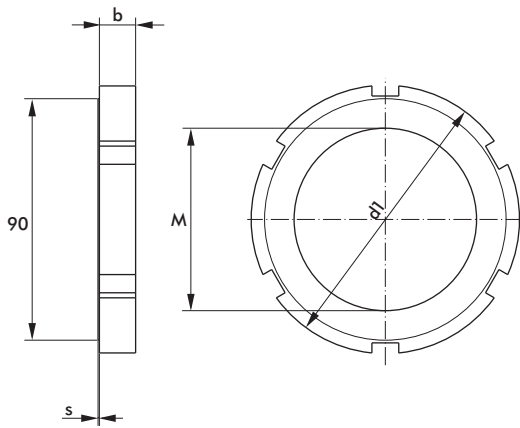
If you need a special cylinder for your application – customer designed models are available. PLEASE LET US KNOW!

### Recommended accessories (separate order)

- Groove nut DIN 1804
- 2 x straight screw connection D8S-R1/4

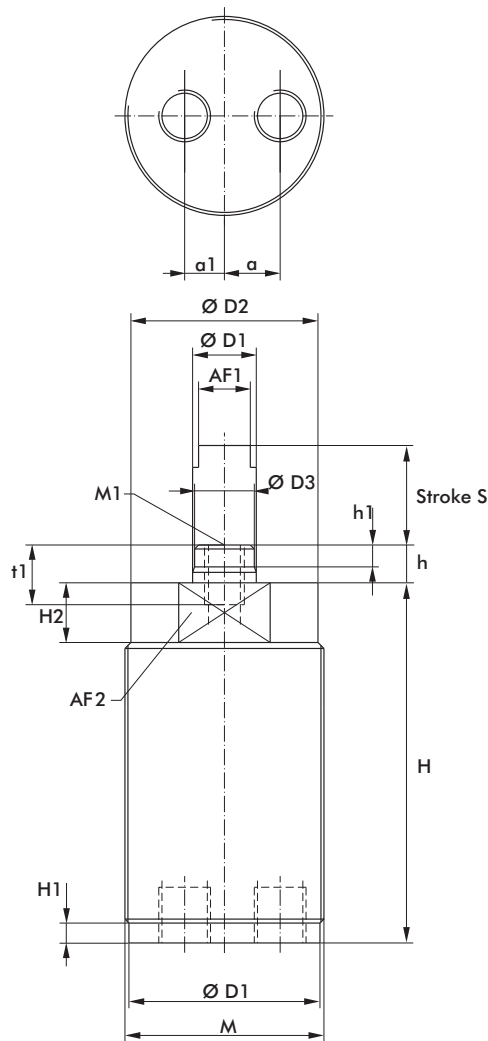


model no.	Clamping force at 100 bar		Repair kit	Piston Ø [mm]	Stroke* S [mm]	Piston surface area		Oil consumption/stroke		Connection G	Weight ~ [kg]
	forward stroke	backstroke				forward	back	forward	back		
	[kN]	[kN]				[cm <sup>2</sup> ]	[cm <sup>2</sup> ]	[cm <sup>3</sup> ]	[cm <sup>3</sup> ]		
721D25501-1	4,8	2,8	720V25-0002	25	50	4,90	2,90	24,50	14,50	G1/4	2,5
721D32501-1	7,9	4,8	720V32-0002	32	50	8,04	4,90	40,20	24,50	G1/4	2,90
721D40501-1	12,3	7,5	720V40-0002	40	50	12,56	7,66	62,80	38,30	G1/4	3,50
721D50501-1	19,3	11,4	720V50-0001	50	50	19,63	11,59	98,15	57,95	G1/4	4,50



Accessories groove nut DIN 1804

order no. M	b	d [mm]	d1	s
M50x1,5N	13	67	75	0,5
M56x1,5N	13	70	80	0,5
M68x1,5N	14	90	100	0,5
M80x2N	16	105	175	1



model no.	a	a1	D	D1	D2	D3	H	H1	H2	h	h1	M	M1	AF1	AF2	t
[mm]																
721D25501-1	14	10	48	16	47	15	133,5	5	15	9,5	5,5	M50x1,5	M10	13	41	20
721D32501-1	17	10	54	20	52	19	138	5	15	10	7	M56x1,5	M12	17	46	24
721D40501-1	22,5	5	65	25	64	24	144	5	15	11	8	M68x1,5	M16	21	55	32
721D50501-1	28	-	76	32	76	31	145,5	5	15	12	8	M80x2	M20	27	65	38