

Operating pressure max. 210 bar/700 bar Conversion ratio 1:30, 1:100

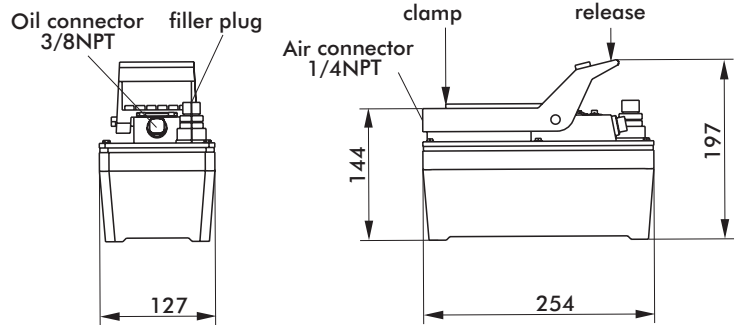
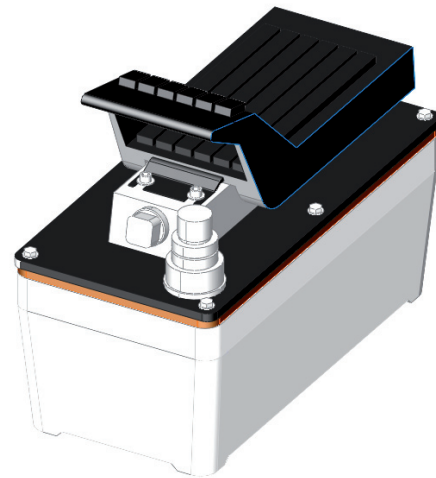
Compact Air-hydraulic-pump for single acting hydraulic tools. This air hydraulic pump can activate a higher number of clamping cylinders simultaneously due to the tank volume of 1600 cm³. The compact lightweight design allows to set up the pumps wherever required. Actuating by foot control valve.

Technical features

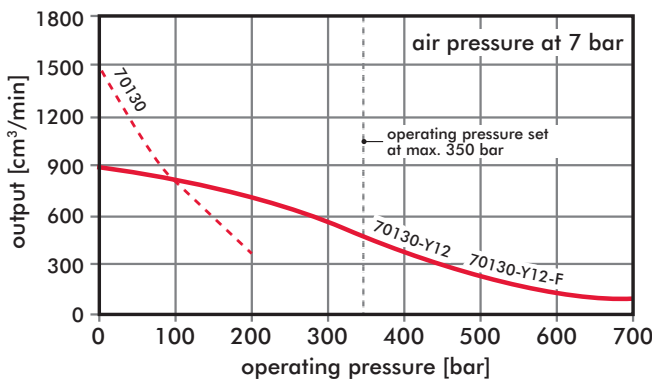
- Switching on the pump and releasing the hydraulic systems pressure is carried out by foot valve activation
- integrated back pressure valve prevents pressure loss in the clamping circuit
- In case of a pressure drop > 10 bar within the pressure circuit, the pump automatically restarts to pump oil in order to restore the set pressure
- Reservoir made of aluminium

Included accessories

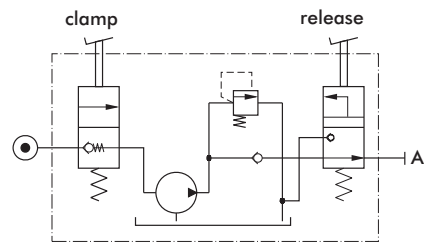
- 1 Transition nipple **R1/4-1/4 NPT**
- 1 Reducing nipple **PTRS-1/4 NPT**
- 1 Straight screw connector **D8L-1/4 NPT** or **D8S-1/4 NPT**



Output characteristics



Schematic diagram



model no.	actuating by	Ratio	oil capacity [cm ³]	usable oil capacity [cm ³]	Air inlet pressure		max. operating pressure [bar]	Air consumption at 6 bar [m ³ /min]	Sound level [dB(A)]	Weight [kg]
					min. [bar]	max. [bar]				
70130	foot control	1:30	1720	1600	3	7	210	0,5	72	6,5
70130-Y12	foot control	1:100	1720	1600	3	7	700	0,5	72	6,5

Operating pressure max. 700 bar
Conversion ratio 1:100

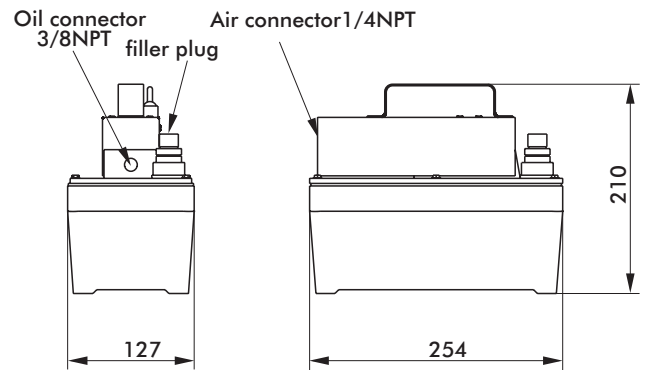
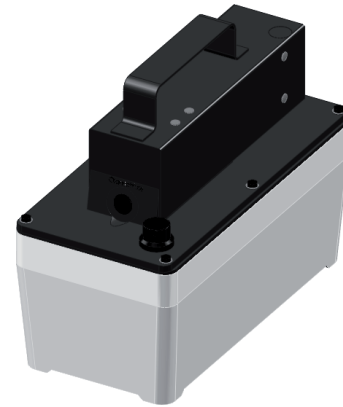
Compact Air-hydraulic-pump for single acting hydraulic tools. This air hydraulic pump can activate a higher number of clamping cylinders simultaneously due to the tank volume of 1600 cm³. The compact lightweight design allows to set up the pumps wherever required. Actuating by remote control valve.

Technical features

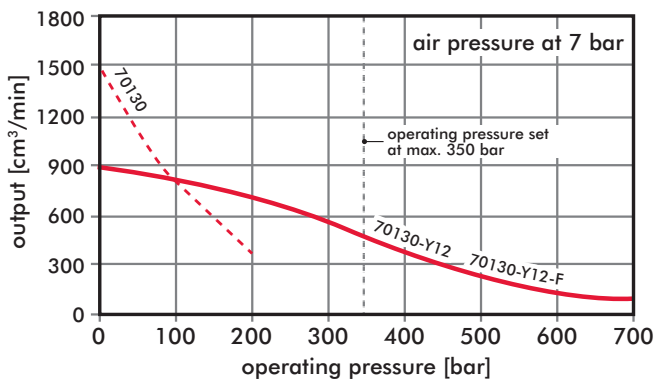
- Switching on the pump and releasing the hydraulic systems pressure is carried out by remote control activation
- integrated back pressure valve prevents pressure loss in the clamping circuit
- In case of a pressure drop > 10 bar within the pressure circuit, the pump automatically restarts to pump oil in order to restore the set pressure
- Reservoir made of aluminium

Included accessories

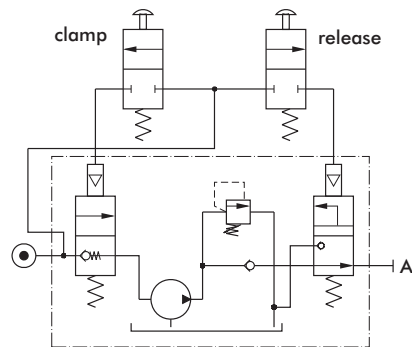
- Transition nipple **R 1/4-1/4 NPT**
- Reducing nipple **PTRS-1/4 NPT**
- Straight screw connector **D8S-1/4 NPT.**



Output characteristics



Schematic diagram



model no	actuating by	Ratio	Reservoir oil	usable oil	Air inlet pressure		max. operating pressure	Air consumption at 6 bar	Sound level	Weight [kg]
			capacity [cm ³]	capacity [cm ³]	min. [bar]	max. [bar]				
70130-Y12-F	remote control	1:100	1720	1600	3	7	210	0.5	72	8,3

Operating pressure max. 700 bar Conversion ratio 1:100

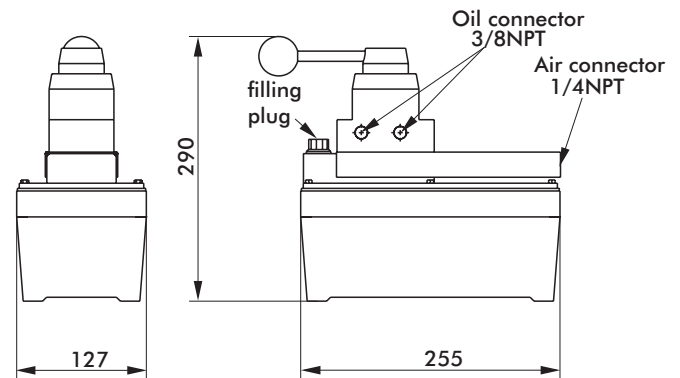
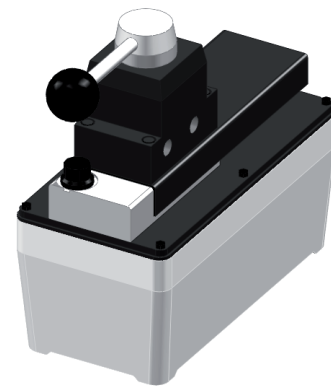
Compact Air-hydraulic-pump for single- and double acting hydraulic tools. This air hydraulic pump can activate a higher number of clamping cylinders simultaneously due to the tank volume of 1600 cm³. The compact lightweight design allows to set up the pumps wherever required. Actuating by manual control valve.

Technical features

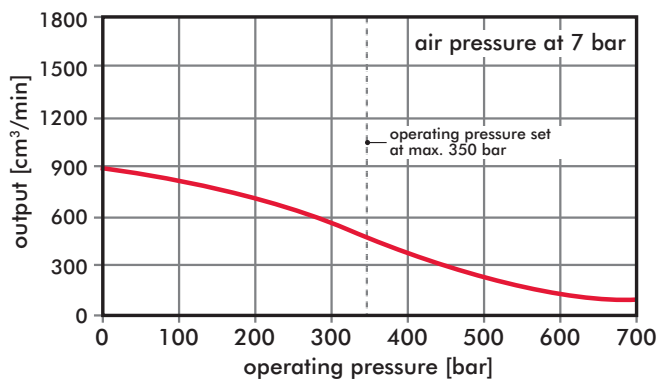
- Switching on the pump and releasing the hydraulic systems pressure is carried out by manual control valve activation
- integrated back pressure valve prevents pressure loss in the clamping circuit
- In case of a pressure drop > 10 bar within the pressure circuit, the pump automatically restarts to pump oil in order to restore the set pressure
- Reservoir made of aluminium

Included accessories

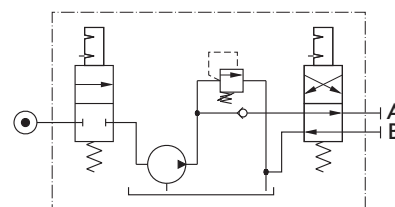
- 1 transition nipple **R 1/4-1/4 NPT**
- 2 reducing nipple **PTRS-1/4 NPT**
- 2 straight screw connector **D8S-1/4 NPT**.



Output characteristics



Schematic diagram



model no.	actuating by	Ratio	oil capacity	usable oil	Air inlet pressure		max. operating pressure	Air consumption at 6 bar	Sound level	Weight
			[cm ³]	capacity [cm ³]	min. [bar]	max. [bar]				
70130-Y12-H	manual valve	1:100	1720	1600	3	7	700	0,5	72	8,4

Operating pressure max. 360 bar
Conversion ratio 1:60

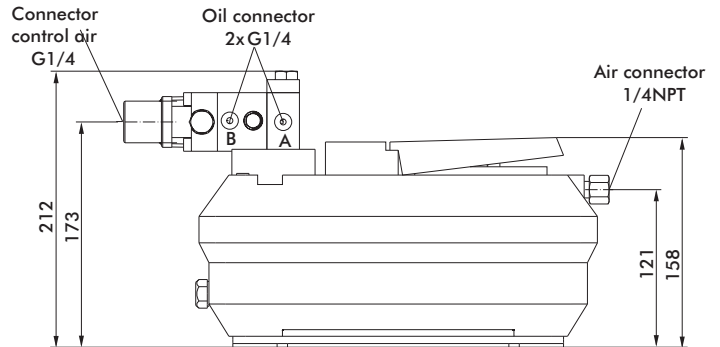
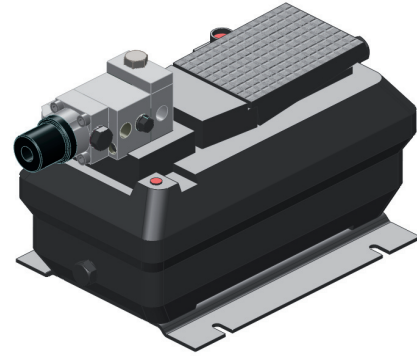
Compact Air-hydraulic-pump for single- and double acting hydraulic tools. This air hydraulic pump can activate a higher number of clamping cylinders simultaneously due to the tank volume of 2100 cm³. The compact lightweight design allows to set up the pumps wherever required.

Technische Merkmale

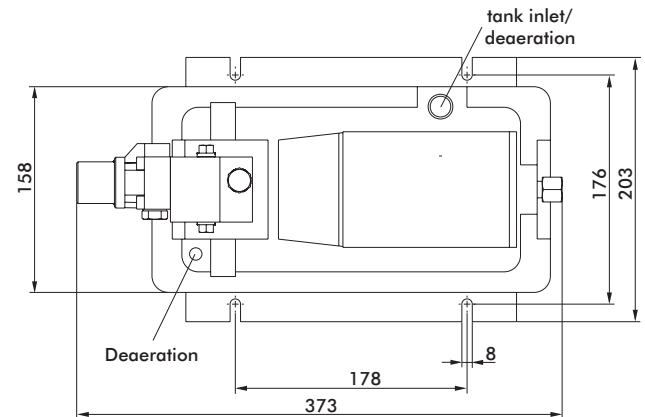
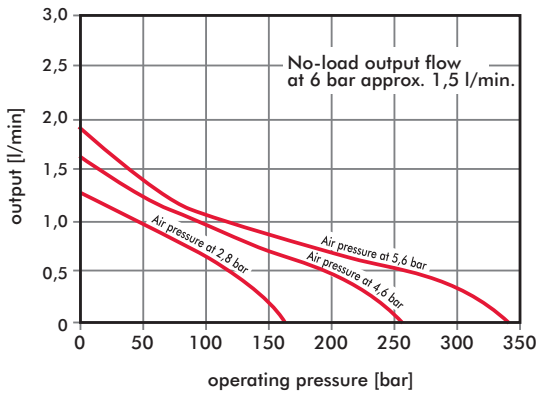
- Switching on the pump and releasing the hydraulic systems pressure is carried out by foot valve activation
- Valve control via air controlled 4/2 way direction valve
- In case of a pressure drop > 10 bar within the pressure circuit, the pump automatically restarts to pump oil in order to restore the set pressure

Optional:

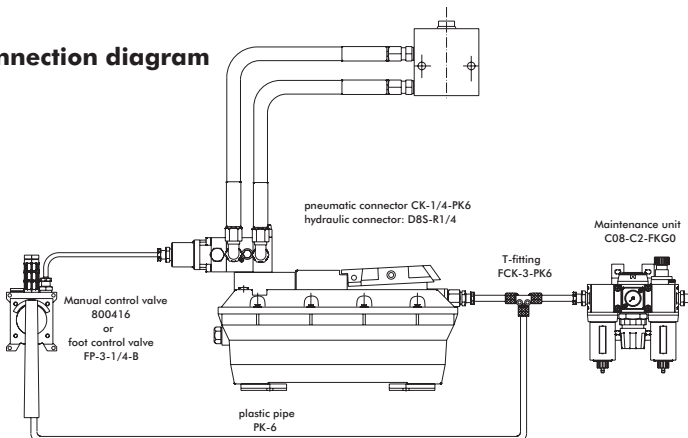
- System extendible via valve vertical interconnection
- Electro-magnetic, mechanical or manual controlled valves available



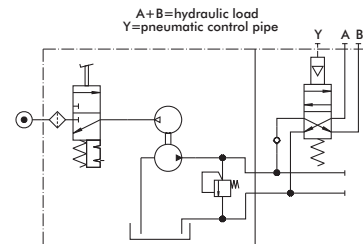
Output characteristics



Connection diagram



Schematic diagram



model no.	actuating by	Ratio	oil quantity		Air inlet pressure		max. operating pressure	Air consumption at 6 bar	Sound level	Weight
			[cm ³]	[cm ³]	min. [bar]	max. [bar]				
70130-HW1DP	4/2 way seat valve, pneumatic piloting	1:60	2500	2100	3	6	360	0,5	79	6,4