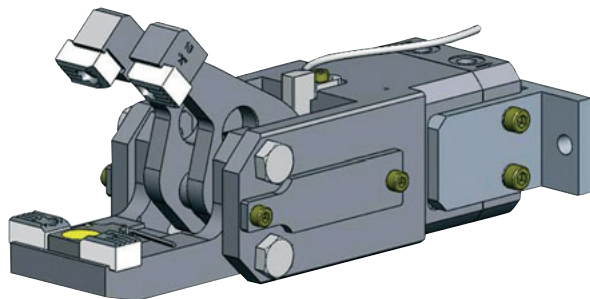


Series **84A5-1** Product Overview

Model: **84A5-11GNAAAAA**



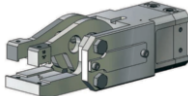





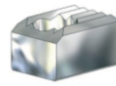
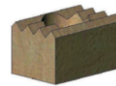
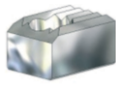
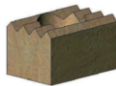




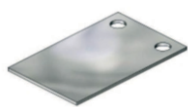
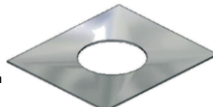
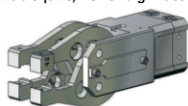
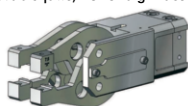
Application:

Gripping, Holding, Placing, Removing and Transporting of metal sheets and other parts, mainly in jigs, press-automation and handling systems.

Features:

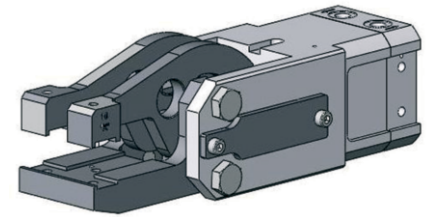
- Compact modular design
- Mounting areas lateral and rear
- fast opening and closing action
- high clamping force
- sensor available

Order no. Example: **84A5 - 11 A8 A AA AA**

Opening angle Standard -76° 30° 45° 60°	84A5-11 = Base model 1 fixed gripper jaw, 2 movable gripper jaws, Straight design 	00 = without sensing system A8 = 8EA-092-1 workplace control switching distance 7mm for 84A5-11  D5 = 8EA-087-1 double blank detector  GK = combination 2 x D5  GN = combination A8 + D5 	0 = without accessories A = 8MA-006-1  Accessories	gripper teeth: steel 00 = without AA = 8JZ-014-3  gripper teeth: plastic KA = 8JZ-021-1 	gripper teeth: steel 00 = without AA = 8JZ-014-3  gripper teeth: plastic KA = 8JZ-021-1  gripper points: PA = 8MJ-1001-1  PB = 8MJ-1002-1  PC = 8MJ-1003-1 			
	84A5-13 = Base model 2 Upper movable jaws, 2 Lower movable jaws, Straight design 					Sensing system Shims for workplace control A8 ordering-no.: 8MB-003-1 to be ordered separately 	Lower gripper teeth Upper gripper teeth/gripper points	
	84A5X11 = Base model 1 fixed gripper jaw, 2 movable gripper jaws, Straight design 							Shims for gripper teeth ordering-no.: 8SB-003-1 to be ordered separately Dimension: 14,8 x 13 x 0,15 mm 
	84A5Y11 = Base model 1 fixed gripper jaw, 2 movable gripper jaws, Straight design 							
84A5Z11 = Base model 1 fixed gripper jaw, 2 movable gripper jaws, Straight design 								
84A5-13 = Base model 2 Upper movable jaws, 2 Lower movable jaws, Straight design 	Base model							
84A5X13 = Base model 2 Upper movable jaws, 2 Lower movable jaws, Straight design 								
84A5Y13 = Base model 2 Upper movable jaws, 2 Lower movable jaws, Straight design 								
84A5Z13 = Base model 2 Upper movable jaws, 2 Lower movable jaws, Straight design 								
84A5R13 = Base model 2 Upper movable jaws, 2 Lower movable jaws, 15° Straight design 								
84A5S13 = Base model 2 Upper movable jaws, 2 Lower movable jaws, 15° Straight design 								
84A5T13 = Base model 2 Upper movable jaws, 2 Lower movable jaws, 15° Straight design 								
84A5U13 = Base model 2 Upper movable jaws, 2 Lower movable jaws, 15° Straight design 								

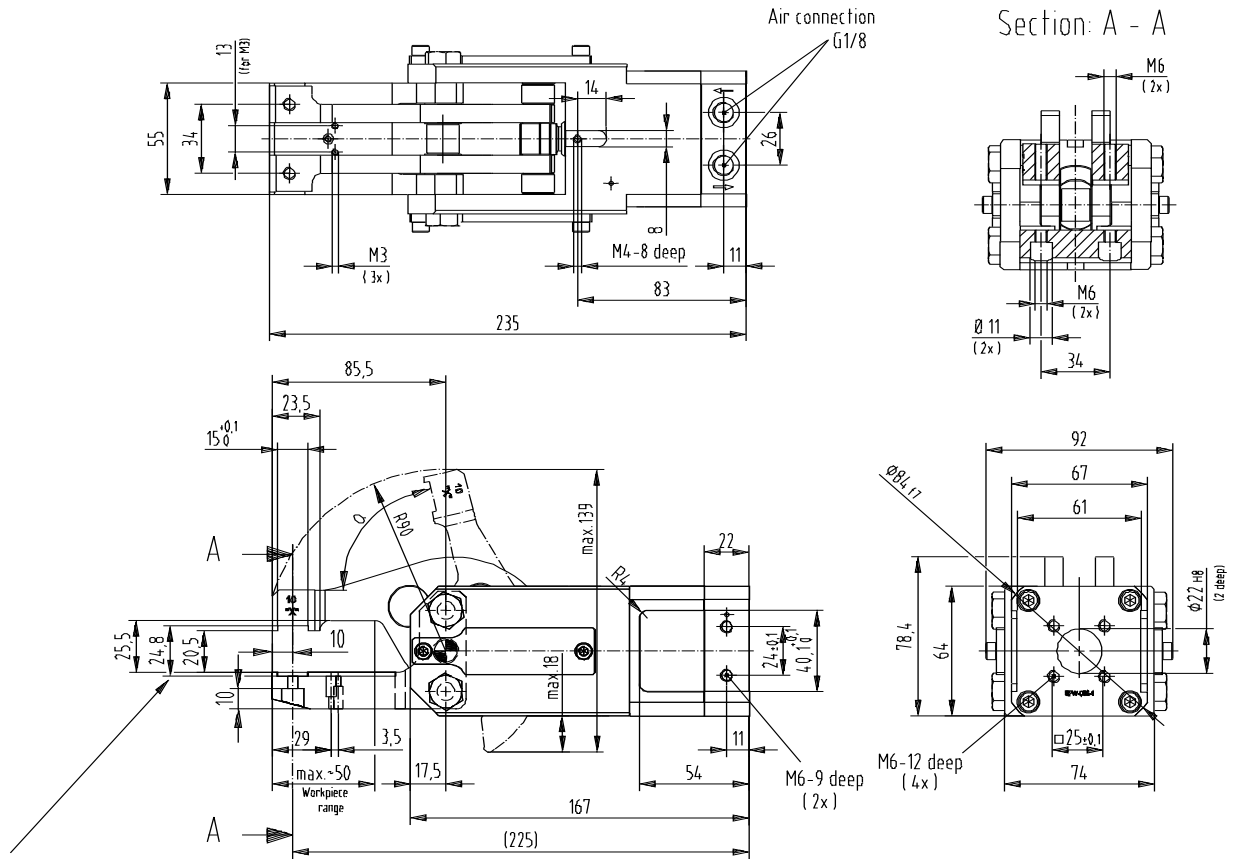
Gripper jaw, top: Gripper teeth, Gripper points, Crown teeth – Dimensions see page 17.52, 17.53, 17.54 and 17.55
Gripper jaw, bottom: Gripper teeth, Gripper points, Crown teeth – Dimensions see page 17.52, 17.53, 17.54 and 17.55
Adapters / Limit stops – Dimensions see page 17.55, 17.56 and 17.57
Sensing systems – Dimensions see page 17.58

Series 84A5-1 Technical Information



84A5-11000000

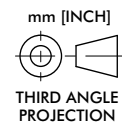
Model	Gripping force at 5 bar N [lbs]	Piston Ø mm [in]	Air consumption per double stroke at 5 bar dm ³ [ft ³]	Weight ~ Kg [lbs]	Min Opening time sec.	Min Closure time sec.
84A5-11...	2000 [449]	50 [1.97]	0,66 [0.02]	2,8 [6.16]	0,6	0,6



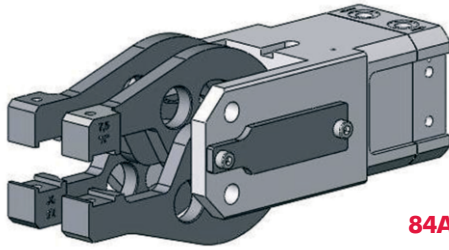
Note!
Addition of gripper teeth height and thickness of the clamped plate must be 24,8 mm. It might be necessary to use shim plates or grind the gripper teeth.

Note!
Any extension of the movable, or the fixed gripper jaws as well as the additional attachment of weights will repeal the guarantee.

Medium air, max. 6 bar
Operation with oil-free air is permissible.

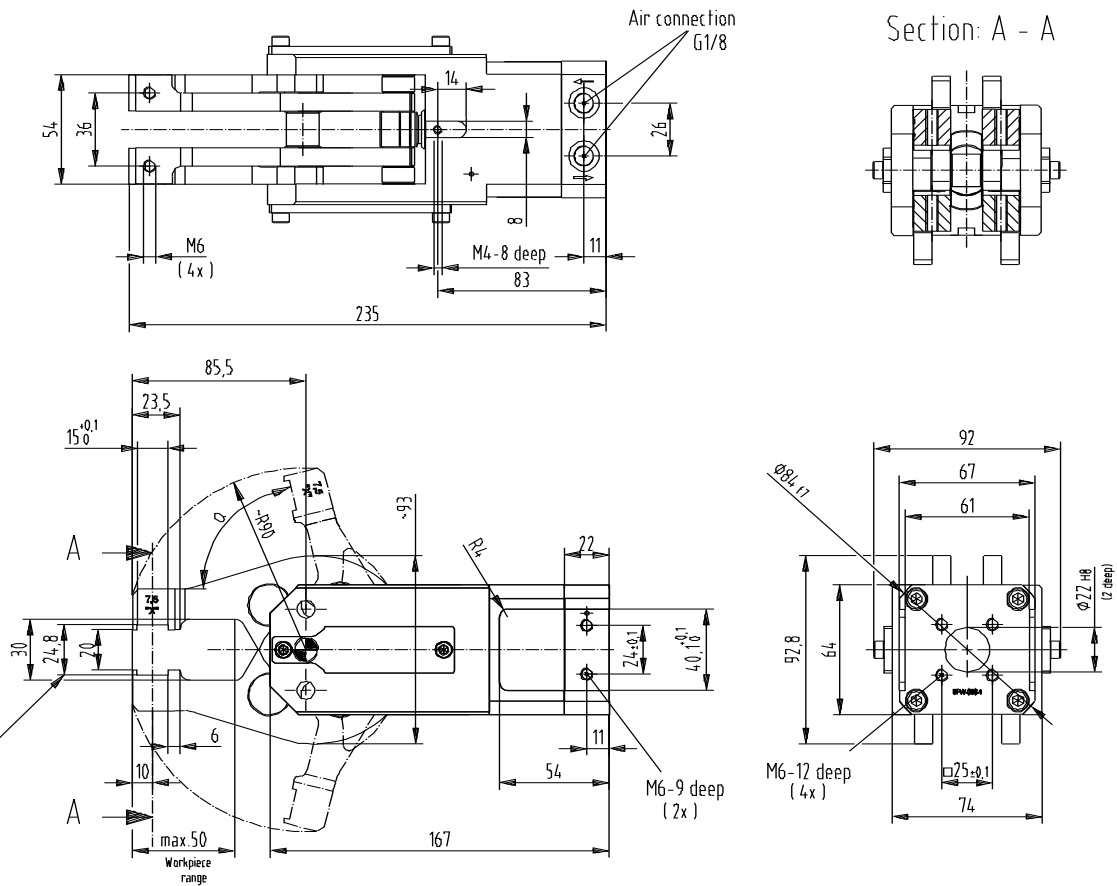


Series **84A5-1** Technical Information



84A5-13000000

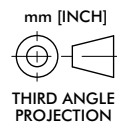
Model	Gripping force at 5 bar N [lbs]	Piston Ø mm [in]	Air consumption per double stroke at 5 bar dm ³ [ft ³]	Weight ~ Kg [lbs]	Min Opening time sec.	Min Closure time sec.
84A5-13...	1200 [270]	50 [1.97]	0,66 [0.02]	2,8 [6.16]	0,6	0,6



Note!
Addition of gripper teeth height and thickness of the clamped plate must be 24,8 mm. It might be necessary to use shim plates or grind the gripper teeth.

Note!
Any extension of the movable, or the fixed gripper jaws as well as the additional attachment of weights will repeal the guarantee.

Medium air, max. 6 bar
Operation with oil-free air is permissible.

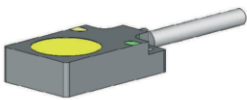


Series **84A5-1** Technical Information and Major Spare Parts

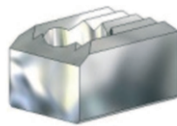
Possible combinations – Gripper teeth/Pins for Cam type gripper **Series 84A5-11**

Gripper teeth / Pins above

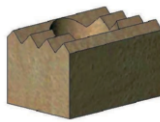
	8JZ-014-3	8JZ-021-1	8MJ-1001-1	8MJ-1002-1	8MJ-1003-1
Gripper teeth / Pins below	8JZ-014-3	with sensor without sensor	with sensor without sensor	with sensor without sensor	with sensor without sensor
	8JZ-021-1	without sensor	without sensor	without sensor	without sensor
	8MJ-1001-1	without sensor	without sensor	without sensor	without sensor
	8MJ-1002-1	without sensor	without sensor	without sensor	without sensor
	8MJ-1003-1	without sensor	without sensor	without sensor	without sensor



sensor for workplace
8EA-092-1



8JZ-014-3
steel



8JZ-021-1
plastic



8MJ-1001-1
steel



8MJ-1002-1
steel



8MJ-1003-1
steel

mounting "M6"

Major spare parts

Specification	Order no. for 84A2-1
Cylinder	8PW-086-1
Seal kit	8PW-086-1-00