

Series 84A3-3 Product Overview

Picture	Model	Clamping Force at 5 bar N [lbs]	Opening Angle	Weight Kg [lbs]	Opening/closure time min sec.
	84A3-310000000	1500 [337]	76°	1,35 [2.86]	0,2
	84A3X310000000		30°		
	84A3Y310000000		45°		
	84A3Z310000000		60°		
	84A3-320000000	950 [213]	76°	1,6 [3.52]	0,2
	84A3X320000000		30°		
	84A3Y320000000		45°		
	84A3Z320000000		60°		
	84A3-330000000	750 [169]	76°	1,35 [2.97]	0,2
	84A3X330000000		30°		
	84A3Y330000000		45°		
	84A3Z330000000		60°		
	84A3-340000000	1500 [337]	76°	1,3 [2.86]	0,2
	84A3X340000000		30°		
	84A3Y340000000		45°		
	84A3Z340000000		60°		
	84A3-350000000	1500 [337]	76°	1,25 [2.75]	0,2
	84A3X350000000		30°		
	84A3Y350000000		45°		
	84A3Z350000000		60°		
	84A3-360000000	570 [128]	76°	1,55 [3.41]	0,3
	84A3X360000000		30°		
	84A3Y360000000		45°		
	84A3Z360000000		60°		
	84A3-370000000	1600 [404]	76°	1,45 [3.17]	0,2
	84A3X370000000		30°		
	84A3Y370000000		45°		
	84A3Z370000000		60°		
	84A3-380000000	1600 [404]	76°	1,4 [3.08]	0,2
	84A3X380000000		30°		
	84A3Y380000000		45°		
	84A3Z380000000		60°		
	84A3R330000000	750 [169]	76° upper, 15° lower	1,35 [2.97]	0,2
	84A3S330000000		30° upper, 15° lower		
	84A3T330000000		45° upper, 15° lower		
	84A3U330000000		60° upper, 15° lower		
	84A3-390000000	1500 [337]	76°	1,3 [2.86]	0,2
	84A3X390000000		30°		
	84A3Y390000000		45°		
	84A3Z390000000		60°		
	84A3-300000000	1500 [337]	76°	1,4 [3.08]	0,2
	84A3X300000000		30°		
	84A3Y300000000		45°		
	84A3Z300000000		60°		

Major spare parts and accessories see page 17.34

Series 84A3-3 Product Overview

Features:

- small size, low weight
- fast opening and closing action
- high clamping force
- long life cycle
- roller and cam principle, self-locking at end stop position
- add-on component and end position sensing available

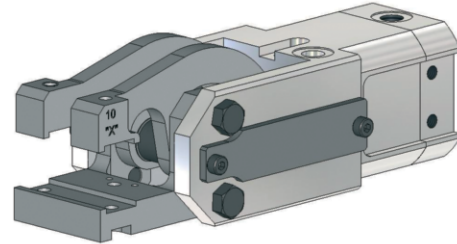
Application:

Gripping, holding, placing, removing and transporting of metal sheets and other parts, mainly in jigs, transfer presses and handling systems.

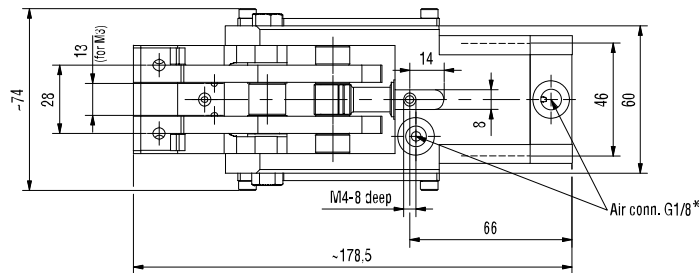
Key areas of application:

Automotive manufacturing, sheet processing industry, jig and general mechanical engineering.

Model	Opening angle
84A3-310000000	76°
84A3X310000000	30°
84A3Y310000000	45°
84A3Z310000000	60°

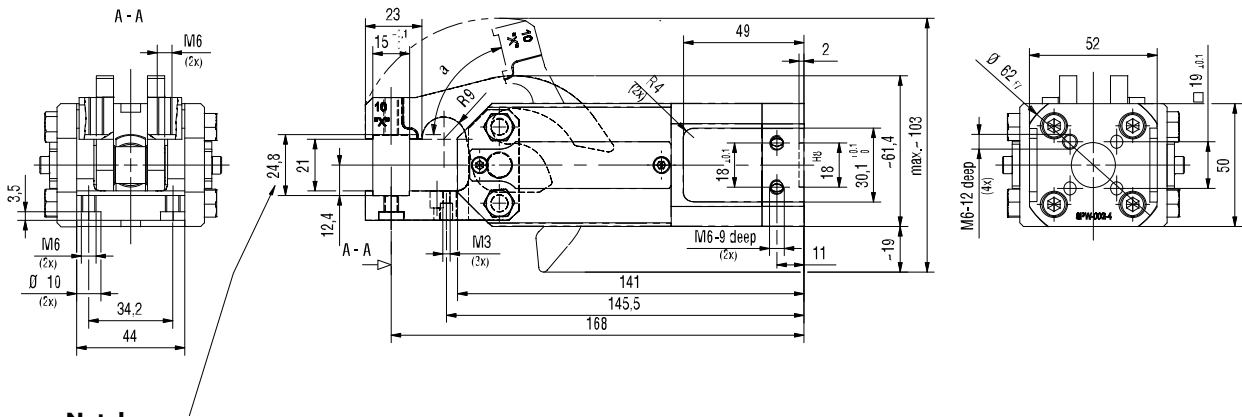


Model	Clamping force at 5 bar ~N [lbs]	Piston Ø mm [in]	Air consumption per double stroke at 5 bar dm³ [ft³]	Gewicht ~ Kg [lbs]	Min Opening speed for max. opening sec.	Min Closing speed for max. opening sec.
84A3-31*****	1500 [337]	32 [1.26]	0,4 [0.01]	1.35 [2.86]	0,2	0,2



Medium: air, min. 3 bar, max. 6 bar operation with oil-free air is permissible.

Attention!
Concept guidelines to be considered

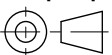


Note!
Addition of the gripper teeth height and thickness of the clamped plate must be 24,8 mm. It might be necessary to use shim plates or to grind the gripper teeth.

Please order separately accessories such as gripper teeth, sensing and adaptors. See page 17.34

* The values of gripping forces include a safety factor 20%

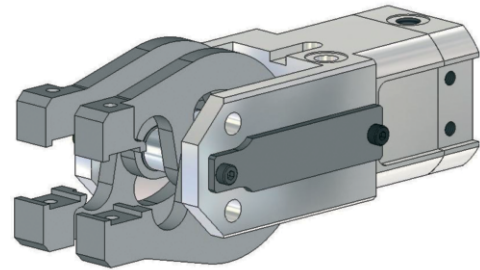
mm [INCH]



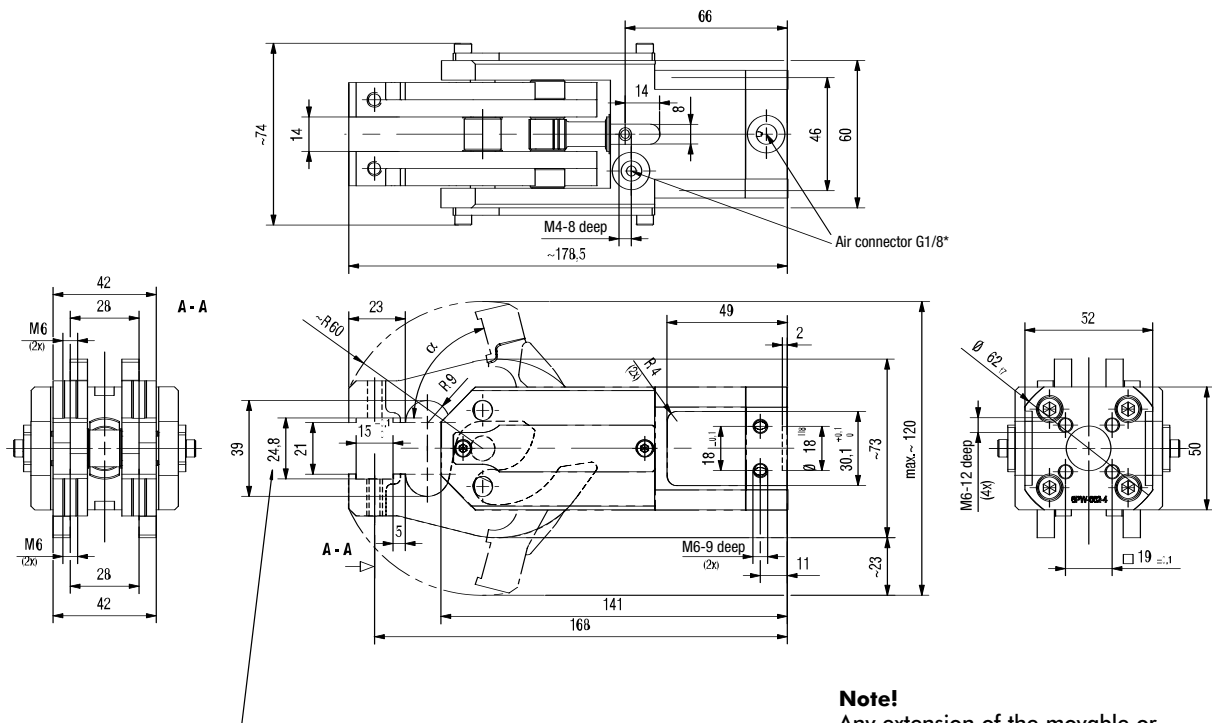
THIRD ANGLE PROJECTION

Series 84A3-3 Product Overview

Model	Opening angle
84A3-330000000	76°
84A3X330000000	30°
84A3Y330000000	45°
84A3Z330000000	60°



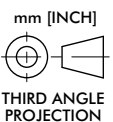
Model	Clamping force at 5 bar ~N [lbs]	Piston Ø mm [in]	Air consumption per double stroke at 5 bar dm³ [ft³]	Gewicht ~ Kg [lbs]	Min Opening speed for max. opening sec.	Min Closing speed for max. opening sec.
84A3-33*****	750 [169]	32 [1.26]	0,4 [0.01]	1,35 [2.97]	0,2	0,2



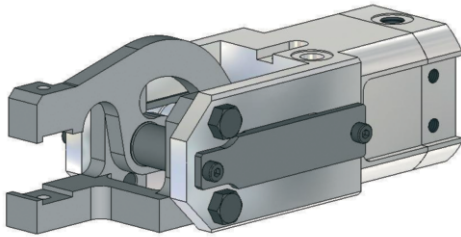
Note!
Addition of the gripper teeth height and thickness of the clamped plate must be 24,8 mm. It might be necessary to use shim plates or to grind the gripper teeth.

Note!
Any extension of the movable or fixed gripper jaws as well as the additional attachment of weights will repeal the guarantee.

Please order separately accessories such as gripper teeth, sensing and adaptors. See page 17.34

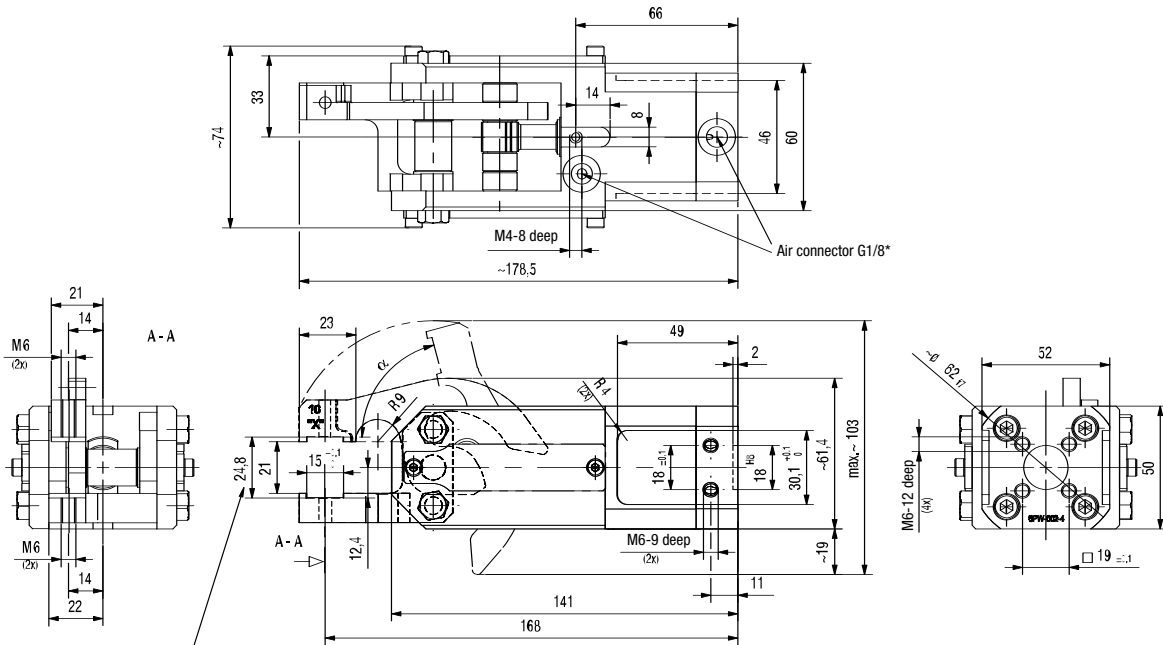


Series **84A3-3** Product Overview



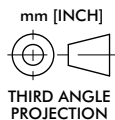
Model	Opening angle
84A3-340000000	76°
84A3X340000000	30°
84A3Y340000000	45°
84A3Z340000000	60°

Model	Clamping force at 5 bar ~N [lbs]	Piston Ø mm [in]	Air consumption per double stroke at 5 bar dm ³ [ft ³]	Gewicht ~ Kg [lbs]	Min Opening speed for max. opening sec.	Min Closing speed for max. opening sec.
84A3-34*****	1500 [337]	32 [1.26]	0,4 [0.01]	1,3 [2.86]	0,2	0,2



Note!
Addition of the gripper teeth height and thickness of the clamped plate must be 24,8 mm. It might be necessary to use shim plates or to grind the gripper teeth.

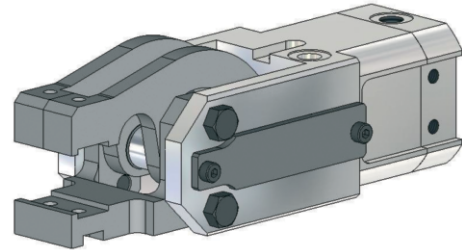
Note!
Any extension of the movable or fixed gripper jaws as well as the additional attachment of weights will repeal the guarantee.



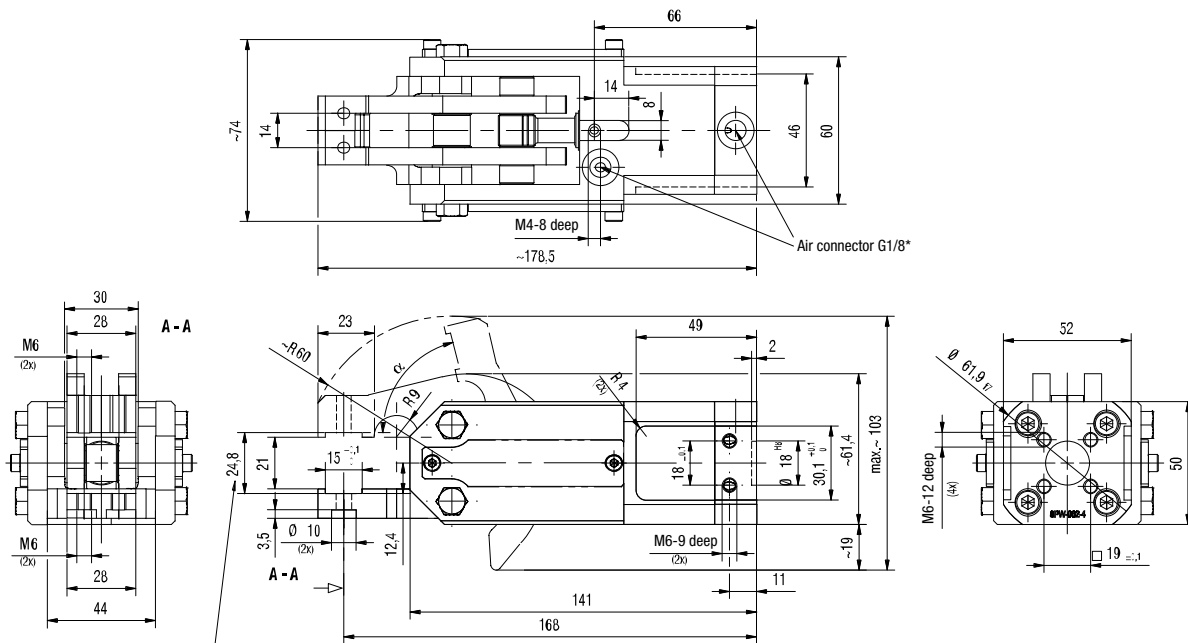
Please order separately accessories such as gripper teeth, sensing and adaptors. See page 17.34

Series 84A3-3 Product Overview

Model	Opening angle
84A3-350000000	76°
84A3X350000000	30°
84A3Y350000000	45°
84A3Z350000000	60°



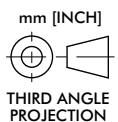
Model	Clamping force at 5 bar ~N [lbs]	Piston Ø mm [in]	Air consumption per double stroke at 5 bar dm³ [ft³]	Gewicht ~ Kg [lbs]	Min Opening speed for max. opening sec.	Min Closing speed for max. opening sec.
84A3-35*****	1500 [337]	32 [1.26]	0,4 [0.01]	1,3 [2.86]	0,2	0,2



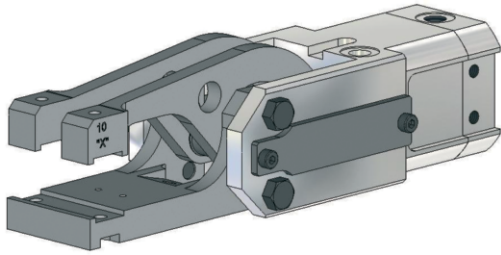
Note!
 Addition of the gripper teeth height and thickness of the clamped plate must be 24,8 mm. It might be necessary to use shim plates or to grind the gripper teeth.

Note!
 Any extension of the movable or fixed gripper jaws as well as the additional attachment of weights will repeal the guarantee.

Please order separately accessories such as gripper teeth, sensing and adaptors. See page 17.34

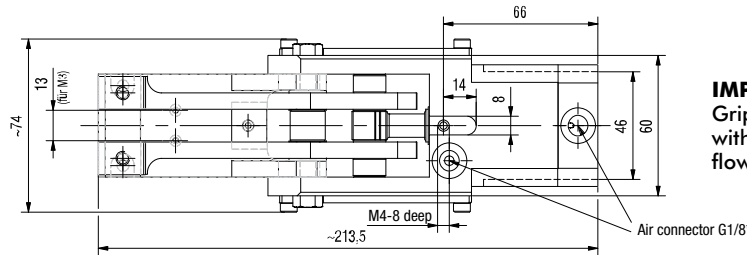


Series 84A3-3 Product Overview

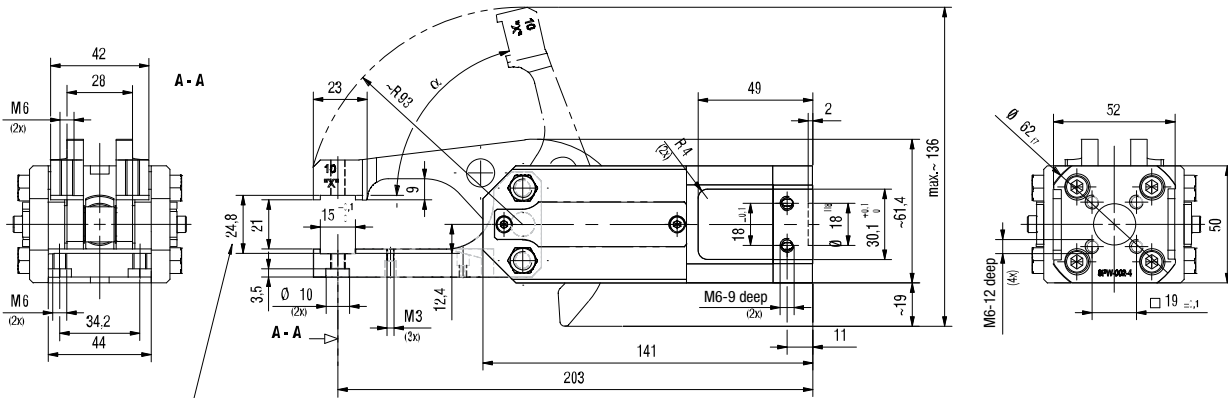


Model	Opening angle
84A3-360000000	76°
84A3X360000000	30°
84A3Y360000000	45°
84A3Z360000000	60°

Model	Clamping force at 5 bar ~N [lbs]	Piston Ø mm [in]	Air consumption per double stroke at 5 bar dm ³ [ft ³]	Gewicht ~ Kg [lbs]	Min Opening speed for max. opening sec.	Min Closing speed for max. opening sec.
84A3-36*****	570 [128]	32 [1.26]	0,4 [0.01]	1,55 [3.41]	0,3	0,3

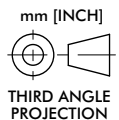


IMPORTANT:
Gripper must only be operated with external pneumatic one way flow control valves



Note!
Addition of the gripper teeth height and thickness of the clamped plate must be 24,8 mm. It might be necessary to use shim plates or to grind the gripper teeth.

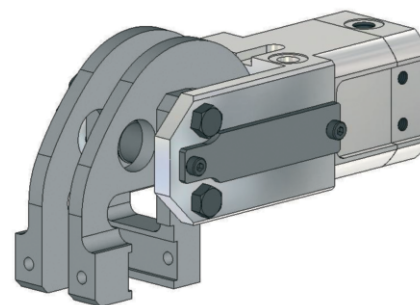
Note!
Any extension of the movable or fixed gripper jaws as well as the additional attachment of weights will repeal the guarantee.



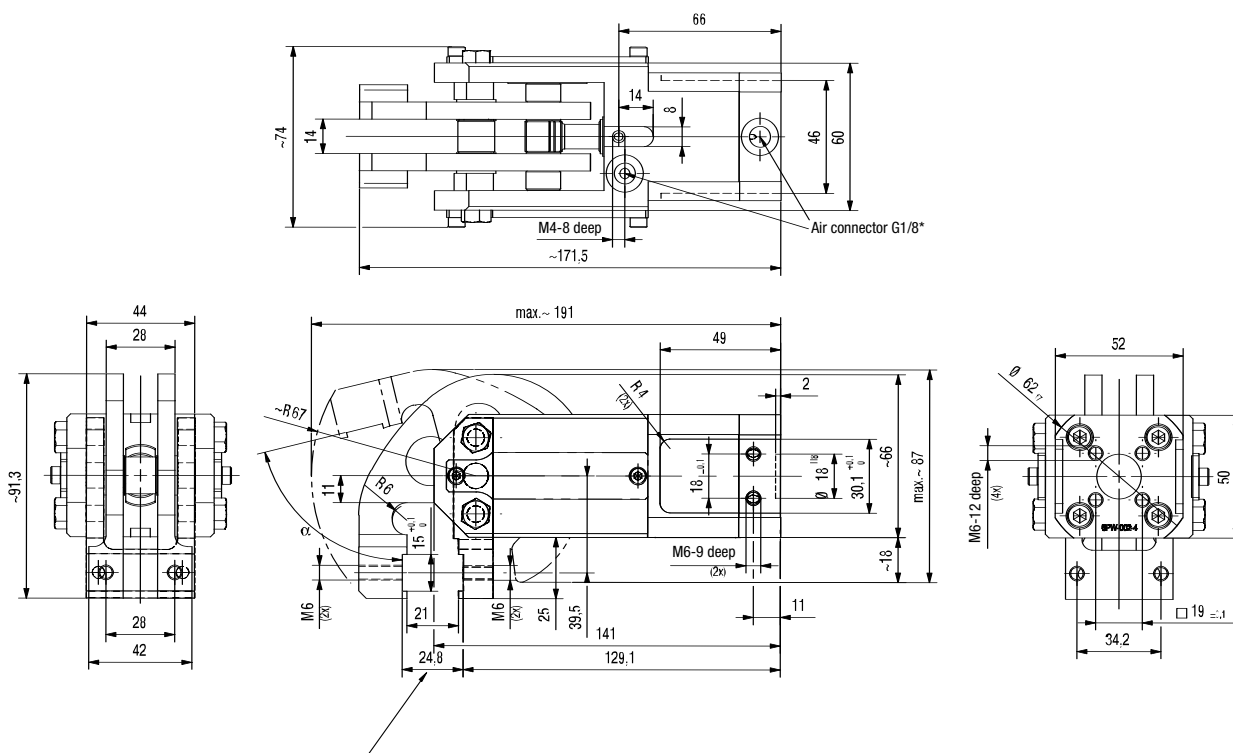
Please order separately accessories such as gripper teeth, sensing and adaptors. See page 17.34

Series 84A3-3 Product Overview

Model	Opening angle
84A3-370000000	76°
84A3X370000000	30°
84A3Y370000000	45°
84A3Z370000000	60°



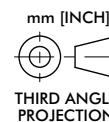
Model	Clamping force at 5 bar ~N [lbs]	Piston Ø mm [in]	Air consumption per double stroke at 5 bar dm ³ [ft ³]	Gewicht ~ Kg [lbs]	Min Opening speed for max. opening sec.	Min Closing speed for max. opening sec.
84A3-37*****	1600 [360]	32 [1.26]	0,4 [0.01]	1,45 [3.17]	0,2	0,2



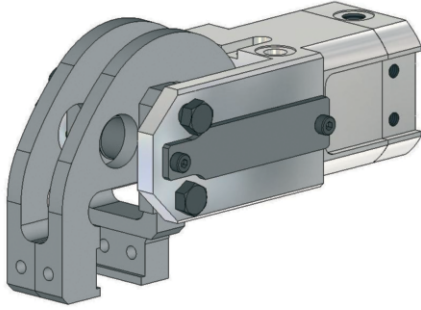
Note!
Addition of the gripper teeth height and thickness of the clamped plate must be 24,8 mm. It might be necessary to use shim plates or to grind the gripper teeth.

Note!
Any extension of the movable or fixed gripper jaws as well as the additional attachment of weights will repeal the guarantee.

Please order separately accessories such as gripper teeth, sensing and adaptors. See page 17.34

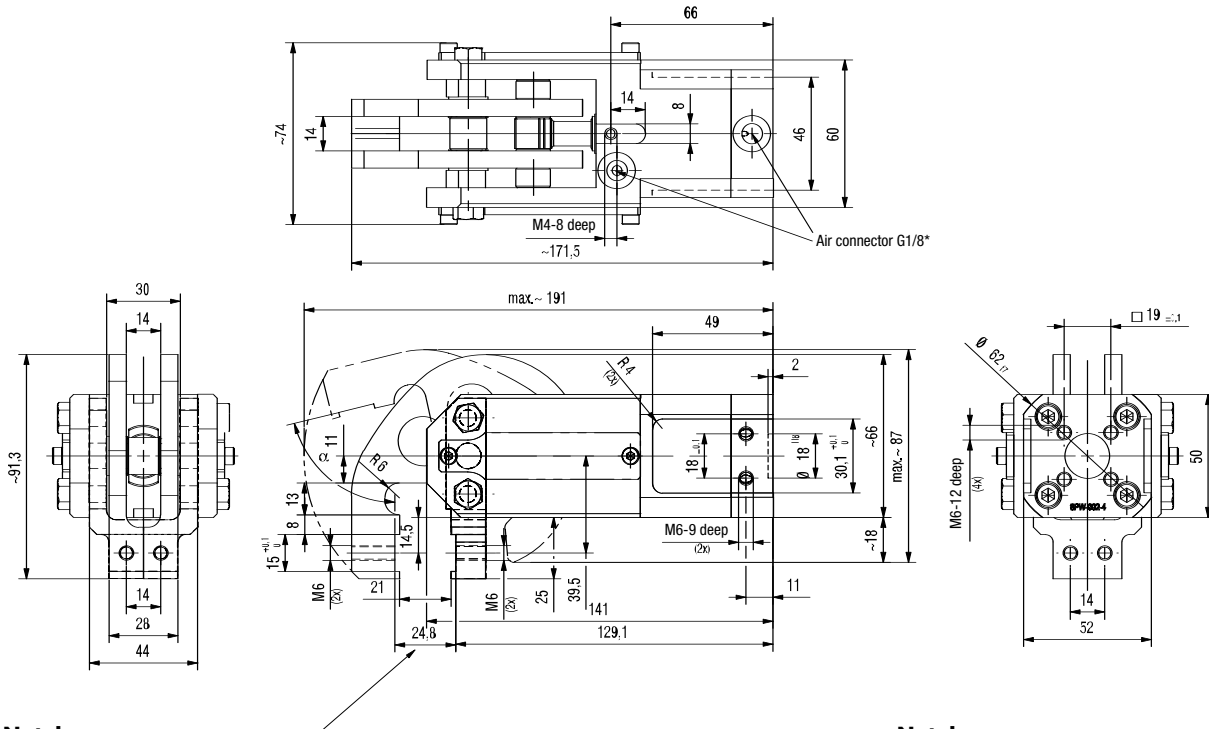


Series **84A3-3** Product Overview



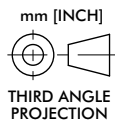
Model	Opening angle
84A3-380000000	76°
84A3X380000000	30°
84A3Y380000000	45°
84A3Z380000000	60°

Model	Clamping force at 5 bar ~N [lbs]	Piston Ø mm [in]	Air consumption per double stroke at 5 bar dm ³ [ft ³]	Gewicht ~ Kg [lbs]	Min Opening speed for max. opening sec.	Min Closing speed for max. opening sec.
84A3-38*****	1600 [360]	32 [1.26]	0,4 [0.01]	1,4 [3.08]	0,2	0,2



Note!
 Addition of the gripper teeth height and thickness of the clamped plate must be 24,8 mm. It might be necessary to use shim plates or to grind the gripper teeth.

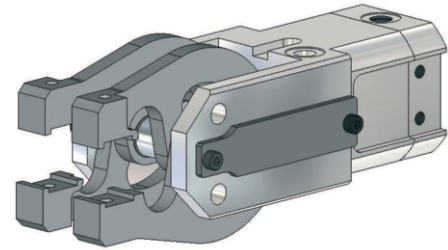
Note!
 Any extension of the movable or fixed gripper jaws as well as the additional attachment of weights will repeal the guarantee.



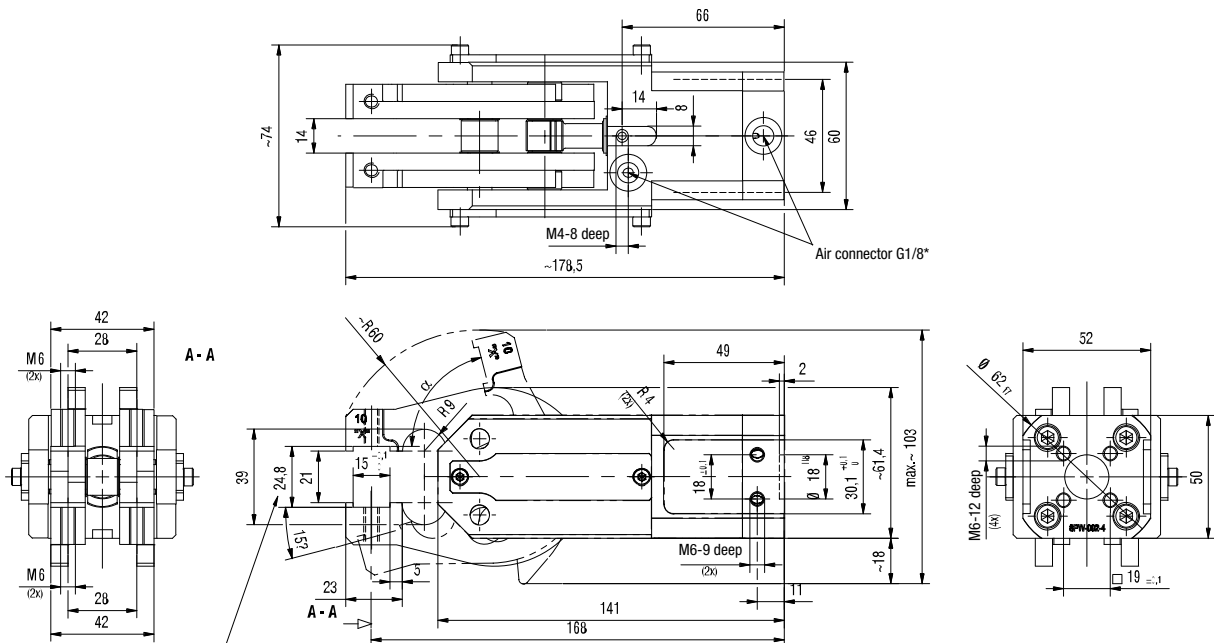
Please order separately accessories such as gripper teeth, sensing and adaptors. See page 17.34

Series 84A3-3 Product Overview

Model	Opening angle	
84A3R330000000	upper 76°	lower 15°
84A3S330000000	upper 30°	lower 15°
84A3T330000000	upper 45°	lower 15°
84A3U330000000	upper 60°	lower 15°



Model	Clamping force at 5 bar ~N [lbs]	Piston Ø mm [in]	Air consumption per double stroke at 5 bar dm ³ [ft ³]	Gewicht ~ Kg [lbs]	Min Opening speed for max. opening sec.	Min Closing speed for max. opening sec.
84A3R33*****	750 [169]	32 [1.26]	0,4 [0.01]	1,35 [2.97]	0,2	0,2

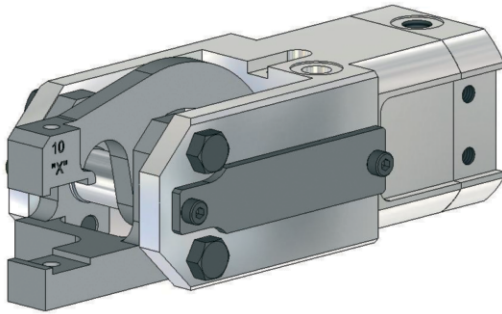


Note!
Addition of the gripper teeth height and thickness of the clamped plate must be 24,8 mm. It might be necessary to use shim plates or to grind the gripper teeth.

Note!
Any extension of the movable or fixed gripper jaws as well as the additional attachment of weights will repeal the guarantee.

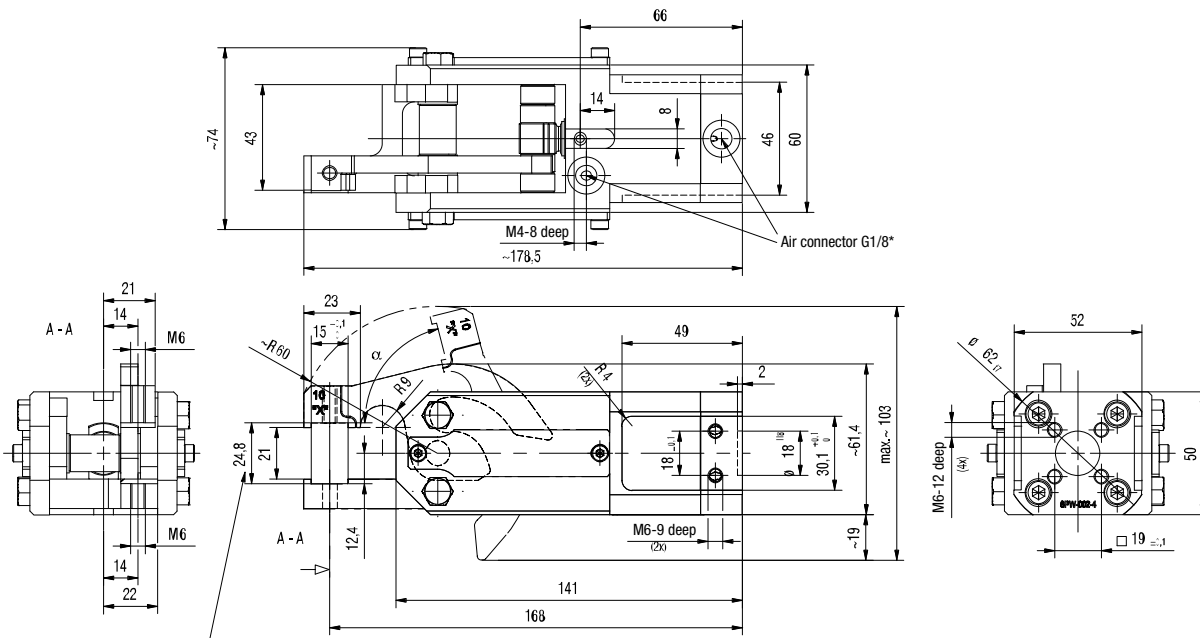
Please order separately accessories such as gripper teeth, sensing and adaptors. See page 17.34

Series **84A3-3** Product Overview



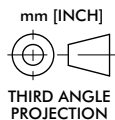
Model	Opening angle
84A3-390000000	76°
84A3X390000000	30°
84A3Y390000000	45°
84A3Z390000000	60°

Model	Clamping force at 5 bar ~N [lbs]	Piston Ø mm [in]	Air consumption per double stroke at 5 bar dm ³ [ft ³]	Gewicht ~ Kg [lbs]	Min Opening speed for max. opening sec.	Min Closing speed for max. opening sec.
84A3-39*****	1500 [337]	32 [1.26]	0,4 [0.01]	1,3 [2.86]	0,2	0,2



Note!
 Addition of the gripper teeth height and thickness of the clamped plate must be 24,8 mm. It might be necessary to use shim plates or to grind the gripper teeth.

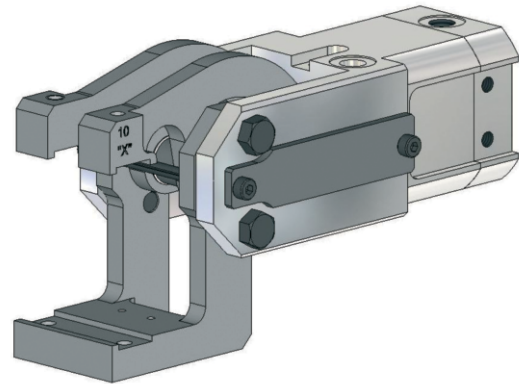
Note!
 Any extension of the movable or fixed gripper jaws as well as the additional attachment of weights will repeal the guarantee.



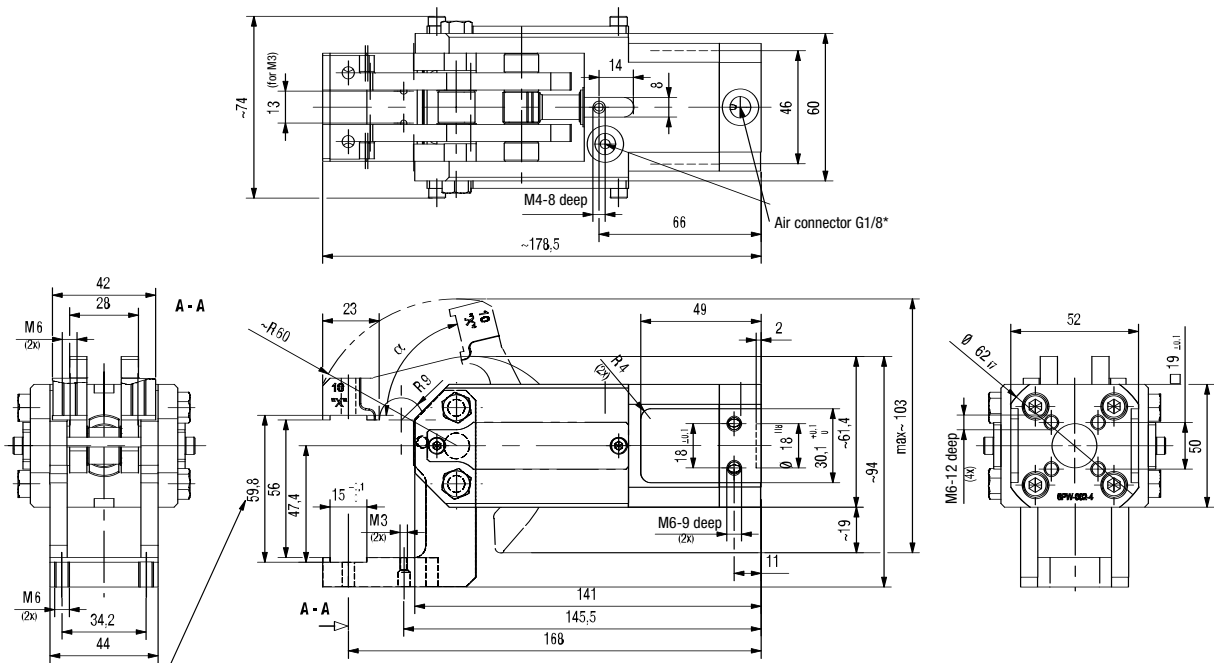
Please order separately accessories such as gripper teeth, sensing and adaptors. See page 17.34

Series 84A3-3 Product Overview

Model	Opening angle
84A3-300000000	76°
84A3X300000000	30°
84A3Y300000000	45°
84A3Z300000000	60°



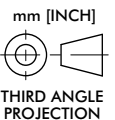
Model	Clamping force at 5 bar ~N [lbs]	Piston Ø mm [in]	Air consumption per double stroke at 5 bar dm³ [ft³]	Gewicht ~ Kg [lbs]	Min Opening speed for max. opening sec.	Min Closing speed for max. opening sec.
84A3-30*****	1500 [337]	32 [1.26]	0,4 [0.01]	1,4 [3.08]	0,2	0,2



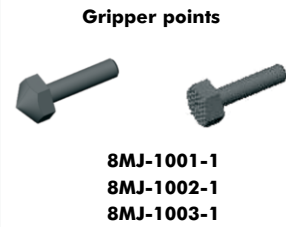
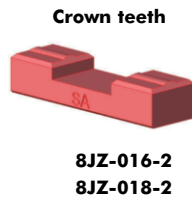
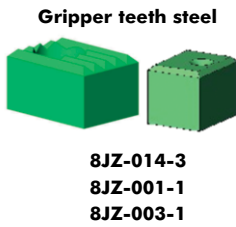
Note!
Addition of the gripper teeth height and thickness of the clamped plate must be 59,8 mm. It might be necessary to use shim plates or to grind the gripper teeth.

Note!
Any extension of the movable or fixed gripper jaws as well as the additional attachment of weights will repeal the guarantee.

Please order separately accessories such as gripper teeth, sensing and adaptors. See page 17.34

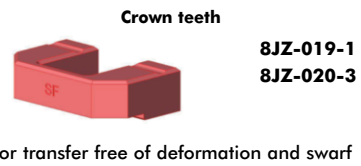


Series **84A3-3** Overview of Accessories and Major Spare Parts



For transfer free of deformation and swarf

Gripper jaw, top: Gripper teeth, Gripper points, Crown teeth – Dimensions see page 17.52, 17.53, 17.54 and 17.55



Gripper jaw, bottom: Gripper teeth, Gripper points, Crown teeth – Dimensions see page 17.52, 17.53, 17.54 and 17.55



Adapters / Limit stops – Dimensions see page 17.55, 17.56 and 17.57



Sensing systems – Dimensions see page 17.58

Accessories

Specification	Order no. for 84A3
Connector (1 connector socket & 5 m cable)	
Connector socket M12x1, straight, 5-pin	8EL-002-1
Connector socket M12x1, angular, 4-pin	8EL-003-1
Opening angle limitation spacer (2 pcs required)	
60°	8MF-046-1
45°	8MF-039-1
30°	8MF-045-1

Major spare parts

Specification	Order no. for 84A3
Cylinder	8PW-002-4
Seal kit	8PW-002-2-00