

Series **82P30-3/82P35-3** Product Overview

Pneumatic locating pin clamps, enclosed and narrow design, with single-sided or double-sided clamping hook

Application:

Clamping, holding, gripping and accurately positioning of metal sheets and other parts in jigs and handling systems.

Key areas of application:

Automotive manufacturing, sheet processing industry, jig and general mechanical engineering.

Features:

- compact design
- low weight (aluminium body)
- single-sided or double-sided clamping hook
- lateral attachment
- centering pin diameters between 20 mm and 45 mm
- toggle action mechanism
- inductive sensing module with LED display



Locating pin clamp 82P30-3..C000
Single-sided clamping hook without centering pin



Locating pin clamp 82P30-3..C0D0
Double-sided clamping hook without centering pin

Locating pin clamps with single-side clamping hook (Centering pin ordered separately)

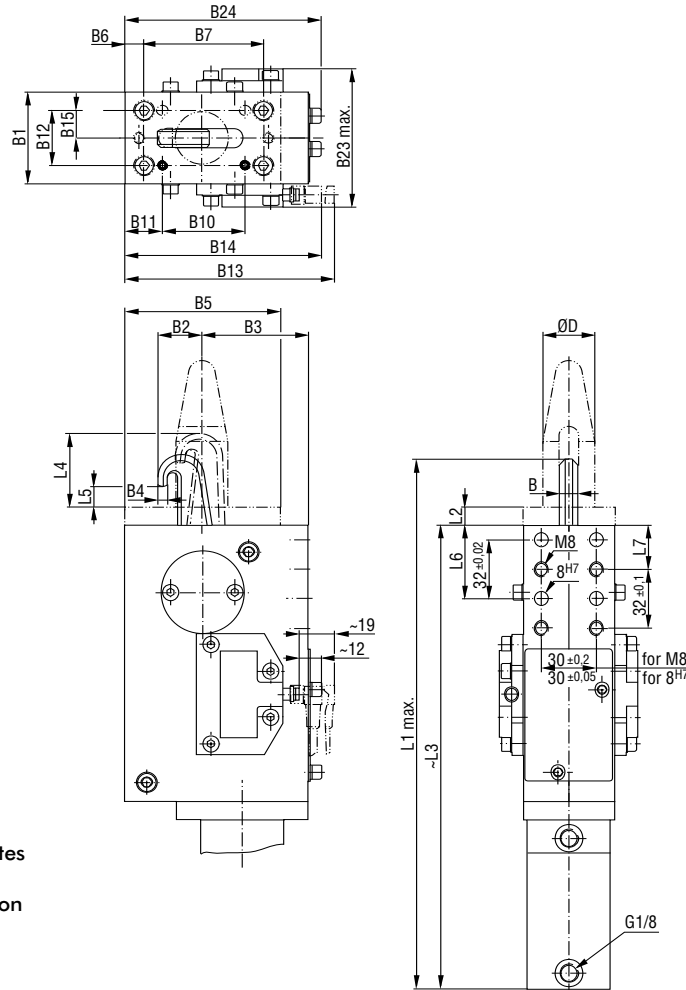
Model		Max. clamping force at 6 bar N [lbs]	Max. operating pressure bar [psi]	Cylinder Ø mm [in]	For centering pin Ø D mm [in]	Weight ~ kg [lbs]	Air consumption per double stroke at 6 bar dm³ [ft³]
with inductive sensing without centering pin	Connector M12x1 Connector M8x1						
82P30-320B800	82P30-320C000	2000 [449]	6 [87]	30 [1.18]	20,0-23,0 [0.79-0.91]	3 [6.60]	0,8 [0.03]
82P30-325B800	82P30-325C000	2000 [449]	6 [87]	30 [1.18]	23,1-28,0 [0.91-1.10]	3 [6.60]	0,8 [0.03]
82P30-330B800	82P30-330C000	2000 [449]	6 [87]	30 [1.18]	28,1-33,0 [1.10-1.30]	3 [6.60]	0,8 [0.03]
82P35-340B800	82P35-340C000	3500 [787]	6 [87]	35 [1.38]	33,1-45,0 [1.30-1.77]	3,4 [7.48]	1,0 [0.04]

Locating pin clamps with double-side clamping hook (Centering pin ordered separately)

Model		Max. clamping force at 6 bar N [lbs]	Max. operating pressure bar [psi]	Cylinder Ø mm [in]	For centering pin Ø D mm [in]	Weight ~ kg [lbs]	Air consumption per double stroke at 6 bar dm³ [ft³]
with inductive sensing without centering pin	Connector M12x1 Connector M8x1						
82P30-320B8D0	82P30-320C0D0	2000 [449]	6 [87]	30 [1.18]	20,0-23,0 [0.79-0.91]	3 [6.60]	0,8 [0.03]
82P30-325B8D0	82P30-325C0D0	2000 [449]	6 [87]	30 [1.18]	23,1-28,0 [0.91-1.10]	3 [6.60]	0,8 [0.03]
82P30-330B8D0	82P30-330C0D0	2000 [449]	6 [87]	30 [1.18]	28,1-33,0 [1.10-1.30]	3 [6.60]	0,8 [0.03]
82P35-340B8D0	82P35-340C0D0	3500 [787]	6 [87]	35 [1.38]	33,1-45,0 [1.30-1.77]	3,4 [7.48]	1,0 [0.04]

Series **82P30-3/82P35-3** Standard Clamp Dimensions

Locating clamp with single-sided clamping hook
Centering pin (has to be ordered separately)



Dimensioning of the counterpart should allow the use of shim plates

Medium: air, max. 6 bar, operation with oil-free air is permissible

Important!
Locating pin clamp must only be operated by external pneumatic one-way flow control valves.

Technical data

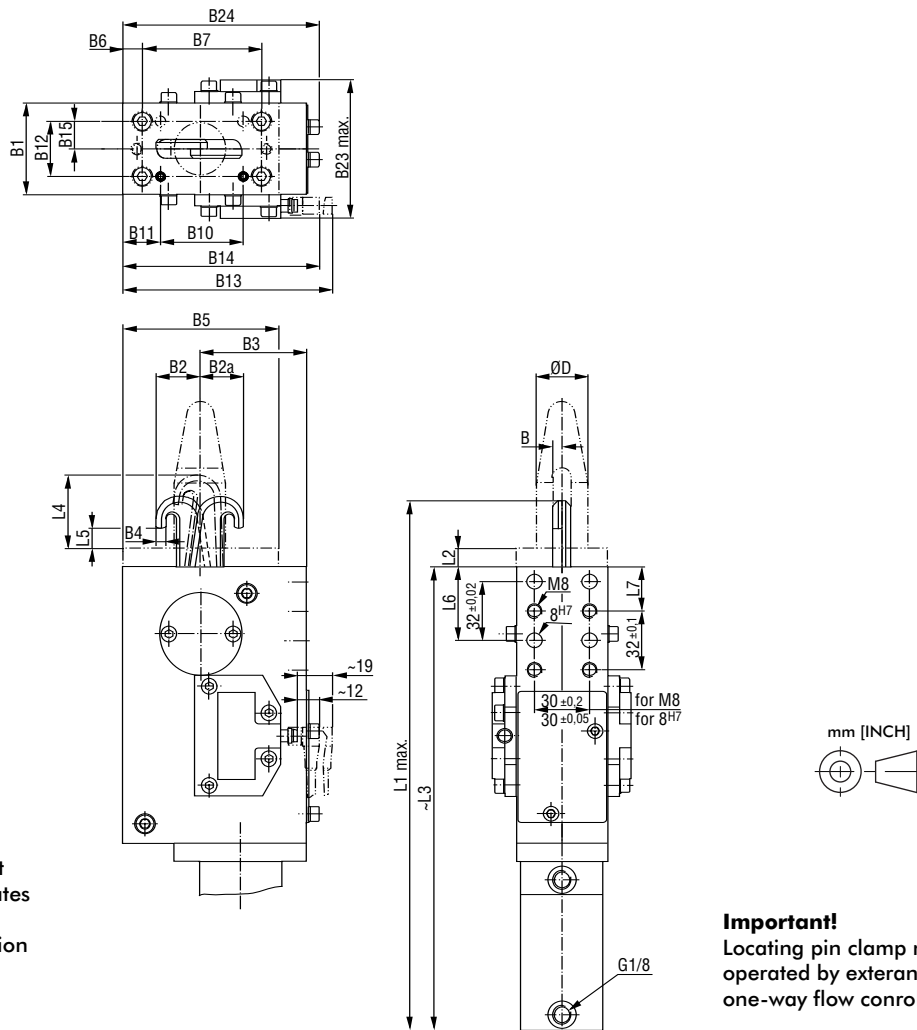
Model		Piston Ø	for Centering Pin Ø D	B	B1	B2	B3	B4	B5	B6	B7	B10	B11	B12*
with inductive sensing										±0,1	±0,2	±0,1	±0,1	±0,05
Connector M12x1	Connector M8x1	-0,05		-0,1										
82P30-320B800	82P30-320C000	30	20,0-23,0	10	50	18,5	58	5	85	10,5	65	35	25,5	30
82P30-325B800	82P30-325C000	30	23,1-28,0	10	50	20,5	58	5,25	85	10,5	65	35	25,5	30
82P30-330B800	82P30-330C000	30	28,1-33,0	10	50	22,5	58	5,25	85	10,5	65	35	25,5	30
82P35-340B800	82P35-340C000	35	33,1-45,0	12	60	34	53	7	90	19	61	37	31	40

Model		B13	B14	B15*	B23	B24	L1	L2	L3	L4	L5	L6	L7
with inductive sensing		max	max	±0,025	max		max	+0,1		~		±0,05	±0,1
Connector M12x1	Connector M8x1												
82P30-320B800	82P30-320C000	114	107	15	75,4	107	304	10	265	40	11,5	40	24
82P30-325B800	82P30-325C000	114	107	15	75,4	107	306	10	265	44	11,5	40	24
82P30-330B800	82P30-330C000	114	107	15	75,4	107	306	10	265	45	11,5	40	24
82P35-340B800	82P35-340C000	114	107	20	85,4	107	330	12	276	56	14	38	22

*Tolerances for dowel holes only

Series **82P30-3/82P35-3** Standard Clamp Dimensions

Locating clamp with double-sided clamping hook
Centering pin (has to be ordered separately)



Dimensioning of the counterpart should allow the use of shim plates

Medium: air, max. 6 bar, operation with oil-free air is permissible

Important!

Locating pin clamp must only be operated by external pneumatic one-way flow control valves.

Technical data

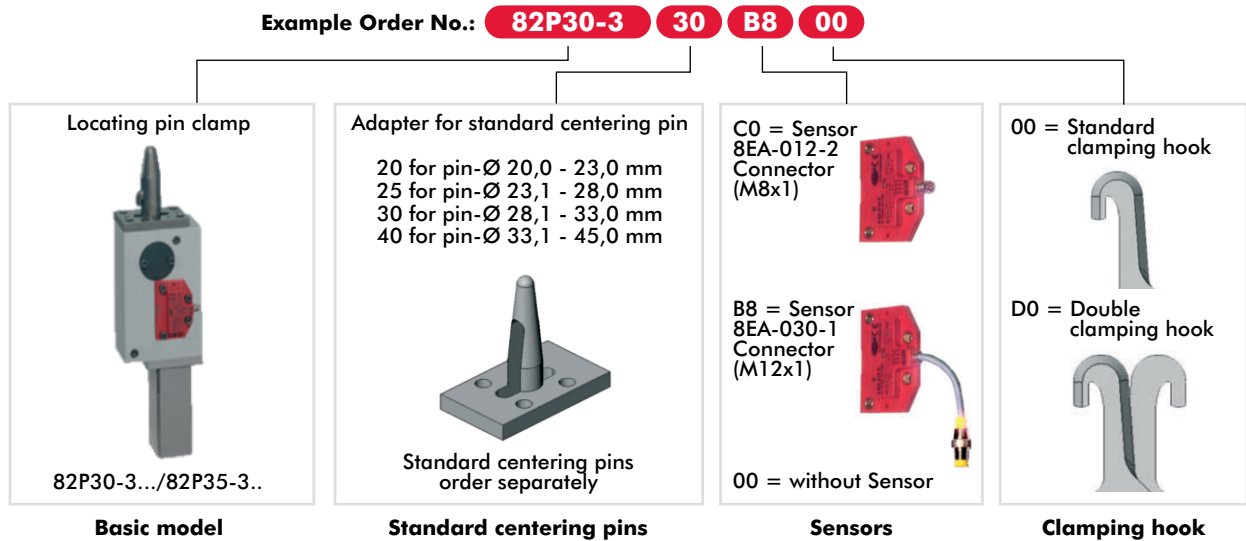
Model with inductive sensing without centering pin		For centering												
		Piston Ø	pin Ø D	B	B1	B2	B2 _a	B3	B4	B5	B6	B7	B10	B11
Connector M12x1	Connector M8x1		-0,05	-0,05							±0,1	±0,2	±0,1	±0,1
82P30-320B8D0	82P30-320C0D0	30	20,0-23,0	5	50	18,5	19,5	58	5	85	10,5	65	35	25,5
82P30-325B8D0	82P30-325C0D0	30	23,1-28,0	5	50	20,5	21,5	58	5,25	85	10,5	65	35	25,5
82P30-330B8D0	82P30-330C0D0	30	28,1-33,0	5	50	22,5	23,5	58	5,25	85	10,5	65	35	25,5
82P35-340B8D0	82P35-340C0D0	35	33,1-45,0	6	60	34	34	53	7	90	19	61	37	31

Model with inductive sensing without centering pin		B12*	B13	B14	B15*	B23	B24	L1	L2	L3	L4	L5	L6	L7
		±0,05	max	max	±0,025	max		max	+0,1		~		±0,05	±0,1
Connector M12x1	Connector M8x1													
82P30-320B8D0	82P30-320C0D0	30	114	107	15	75,4	107	304	10	265	40	11,5	40	24
82P30-325B8D0	82P30-325C0D0	30	114	107	15	75,4	107	306	10	265	44	11,5	40	24
82P30-330B8D0	82P30-330C0D0	30	114	107	15	75,4	107	306	10	265	45	11,5	40	24
82P35-340B8D0	82P35-340C0D0	40	114	107	20	85,4	107	330	12	276	56	14	38	22

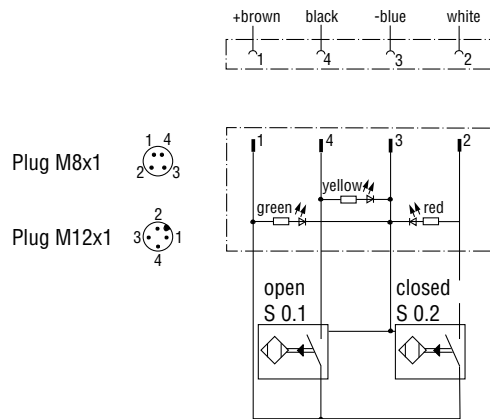
*Tolerances for dowel holes only

Series **82P30-3/82P35-3** Ordering Information

Order no. code for locating pin clamps 82P30-3... / 82P35-3...



Pin assignment



Wiring diagram of electrical sensing system

Sensing system immune to interference from d.c. arc welding and a.c. arc welding

Inductive models:

- B8 inductive, with LEDs, connector plug M12x1
- C0 inductive, with LEDs, connector plug M8x1

Accessories for 82P30/35-3...

Specification	Order no. for structure component	
	82P30-3...	82P35-3...
Centering pins (put diameter in model number)	82P30-3-__ _1)	82P35-3-__ _1)
Connecting cable (1 connector socket & 5 m cable)		
B7 / B8 sensing system		
Connector socket M12x1, straight, 5-pin	8EL-002-1	8EL-002-1
Connector socket M12x1, angular, 4-pin	8EL-003-1	8EL-003-1
C0 sensing system		
Connector socket M8x1, straight, 4-pin	8EL-009-1	8EL-009-1
Connector socket M8x1, angular, 4-pin	8EL-007-1	8EL-007-1

1) __ _ = centering pin diameter "D" as illustrated on page 15.81-82

Ordering example: To order the centering pin for locating pin clamp 82P30-325C000 with pin diameter "D" = 26.5 mm: "82P30-3-26.5"

Series **82P30-3/82P35-3** Product Overview, Standard Centering Pin Dimensions

Centering pin (has to be ordered separately)

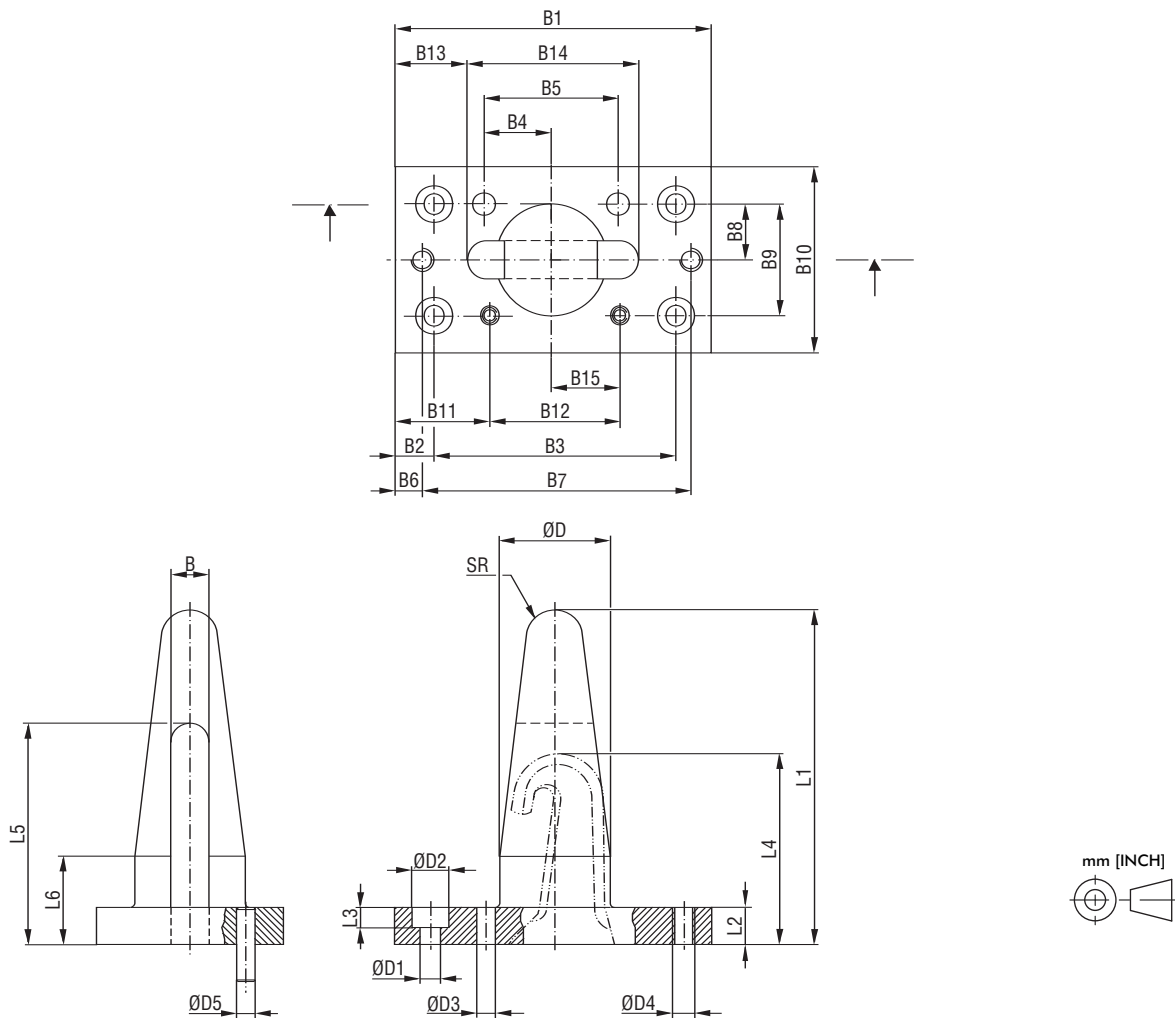


Locating pin clamp with single-sided clamping hook and centering pin



Centering pin (accessory part)

Centering pin for 82P30-3... and 82P35-3...



mm [INCH]



Series **82P30-3/82P35-3** Technical Information

Technical data of centering pins

Base locating clamp model	Order no. for centering pin	ØD	ØD1	ØD2	ØD3	ØD4	ØD5	SR	L1	L2	L3	L4	L5	L6	B	B1	B2
		-0,05			H7		H11										±0,1
82P30-320....	82P30-3-___.1)	20,0-23,0	5,5	10	6	M6	5	5	80	10	6	52	59,5	25	10,2	85	10,5
82P30-325....	82P30-3-___.1)	23,1-28,0	5,5	10	6	M6	5	7,5	90	10	6	54	59,5	25	10,2	85	10,5
82P30-330....	82P30-3-___.1)	28,1-33,0	5,5	10	6	M6	5	7,5	90	10	6	55	59,5	25	10,2	85	10,5
82P35-340....	82P35-3-___.1)	33,1-45,0	5,5	10	6	M6	5	8	102	12	6	68	73,5	30	12,2	90	19

Base locating clamp model	Order no. for centering pin	B3	B4	B5	B6	B7	B8*	B9*	B10	B11	B12	B13	B14	B15
		±0,2	±0,02	±0,02		±0,2	±0,025	±0,05		±0,1	±0,1			±0,05
82P30-320....	82P30-3-___.1)	65	18	36	10,5	65	15	30	50	25,5	35	19,4	46,2	18,5
82P30-325....	82P30-3-___.1)	65	18	36	10,5	65	15	30	50	25,5	35	19,4	46,2	18,5
82P30-330....	82P30-3-___.1)	65	18	36	10,5	65	15	30	50	25,5	35	19,4	46,2	18,5
82P35-340....	82P35-3-___.1)	61	18	36	7	76	20	40	60	31	37	16	62	21

* Tolerance for dowel hole

1) ___.1 = centering pin diameter "D"

Ordering example: To order the centering pin for locating pin clamp 82P30-325C000 with pin diameter "D" = 26.5 mm: "82P30-3-26.5"

Major spare parts for 82P30-3/82P35-3

Specification	Order no. for structural component	
	82P30-3...	82P35-3...
End position sensing		
B8 plug connector M12x1	8EA-030-1	8EA-030-1
C0 plug connector M8x1	8EA-012-2	8EA-012-2
Cylinder	8PW-019-1	8PW-006-1
Seal kit	8PW-019-1-00	8PW-001-1-00