

Series 89E, 8000, 8200, 8400 Product Overview

Features:

- Proven, reliable designs
- Lightweight and robust, designed for several million cycles
- Threaded body may be mounted in a tapped hole or through hole with mounting accessory

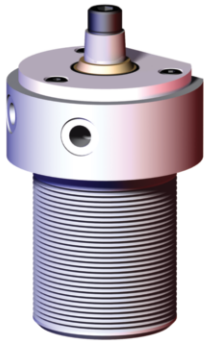
Applications:

- Assembly
- Welding
- Light machining

Also Available:

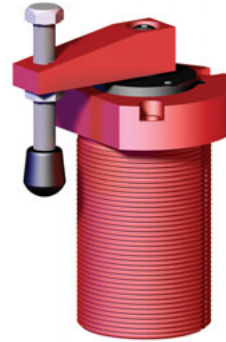
See page 12.1 - 12.9 for clamping arms and mounting accessories
 See page 13.1 for sensing options
 Sensing available for 8000, 8200 and 8400 only.

Series 89E ■



Available in 20, 30, 40, 50, and 63mm bore sizes
 Clamping arms and mounting accessories sold separately, see page 12.2 - 12.5
 Not sensor ready.

Series 8000, 8200, 8400 ▲



Sensor ready.
 Supplied with clamping arm and spindle.
 To order without clamping arm add **-LA** to the end of the model. Ex. 8115-**LA**

Series 89E, 8000, 8200, 8400 Technical Information

Model	Swing	Total Stroke mm[in]	Travel During Rotation mm[in]	Vertical Clamp Stroke mm[in]	Bore Size mm[in]	Clamp Volume cm ³ [in. ³]	Unclamp Volume cm ³ [in. ³]	Clamping Force @ 6bar[87PSI] N[lbf.]†	Weight kg[lb.]	Seal Kit
■ 89E20-010-1R	R	[0.79]	[0.39]		[0.79]	[0.29]	[0.38]	[22]	[0.62]	8940-3-00
■ 89E20-010-1L	L	20	10		20	4,71	6,28	97	0,28	
■ 89E30-010-1R	R	[0.83]	[0.43]	[0.39]	[1.18]	[0.76]	[0.91]	[63]	[0.88]	8945-3-00
■ 89E30-010-1L	L	21	11	10	30	12,47	14,85	280	0,40	
■ 89E40-010-1R	R	[0.94]	[0.55]		[1.57]	[1.55]	[1.84]	[103]	[1.57]	8950-3-00
■ 89E40-010-1L	L	24	14		40	25,34	30,16	460	0,71	
■ 89E50-025-1R	R	[1.57]	[0.59]	[0.98]	[1.97]	[4.17]	[4.79]	[194]	[2.91]	8952-3-00
■ 89E50-025-1L	L	40	15	25	50	68,37	78,55	865	1,32	
■ 89E63-008-1R	R	[1.02]	[0.71]	[0.32]	[2.48]	[4.45]	[4.95]	[298]	[4.63]	8955-3-00
■ 89E63-008-1L	L	26	18	8	63	72,89	81,06	1,330	2,10	
▲ 8015	R	[0.85]	[0.47]	[0.38]	[0.75]	[0.25]	[0.38]	[25]		801560
▲ 8016	L	21,5	11,8	9,7	19,1	4,10	6,23	110		
▲ 8215	R				[1.50]	[2.01]	[2.26]	[89]	[1.69]	821560
▲ 8216	L	[1.25]	[0.75]	[0.50]	38,1	32,94	37,03	400	0,77	
▲ 8415	R	31,8	19,1	12,7	[1.19]	[1.17]	[1.42]	[68]		841560
▲ 8416	L				30,2	19,17	23,27	300		

† with standard clamping arm Preferred Market: ▲ NA/SA ■ Europe ● Global

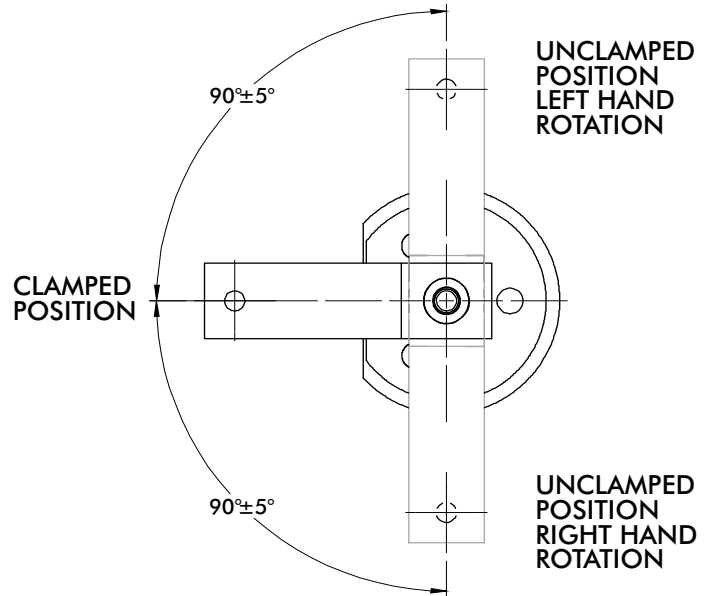
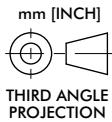
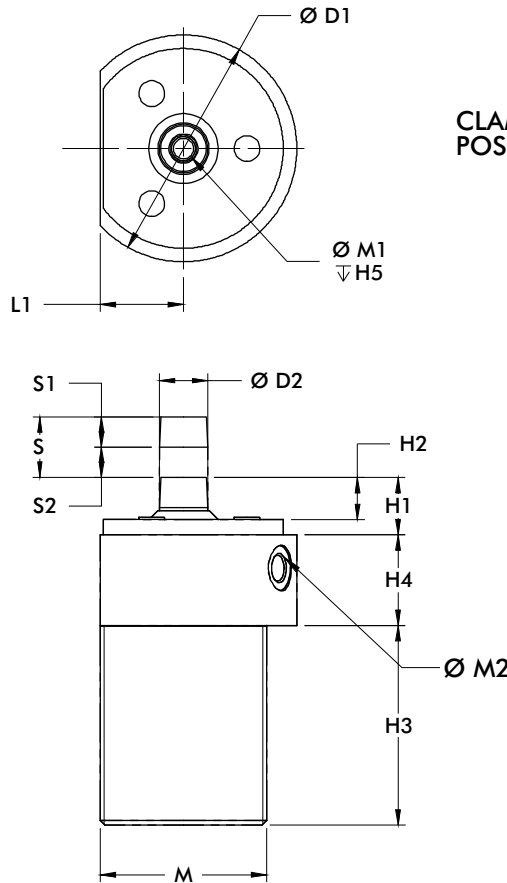
Operating Pressure Range:

89E: 3bar [30psig] to 10bar [145psig] (89B20 8bar [116psig] max.)
8000, 8200, 8400: 3bar [30psig] to 9bar [130psig]

Maximum Operating Temperature:

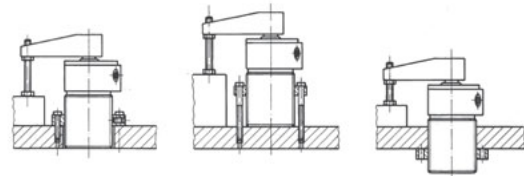
89B: -20°C to 80°C [-4°F to 176°F]
8100, 8300: -18°C to 60°C [0°F to 140°F]

Series 89E Standard Clamp Dimensions



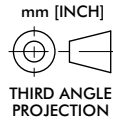
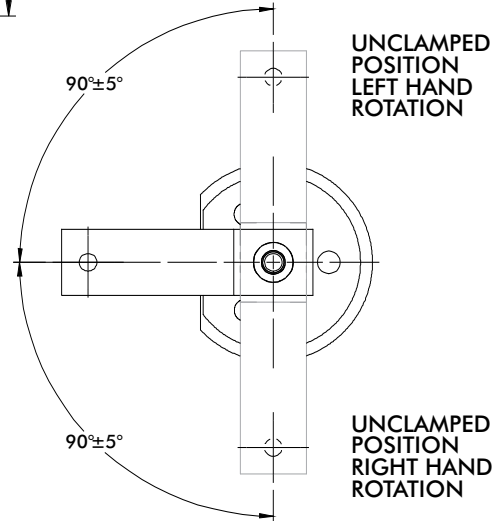
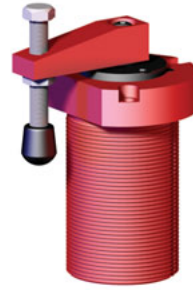
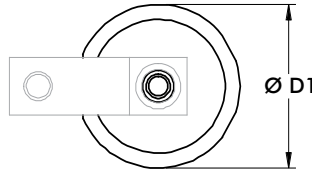
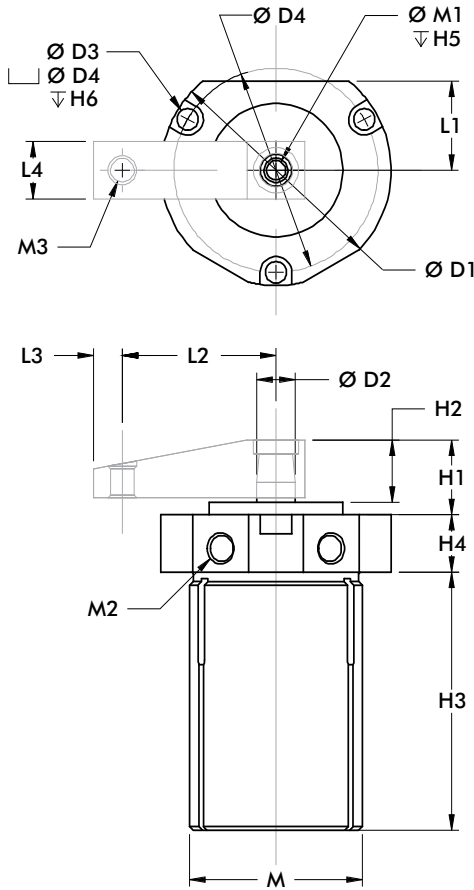
Swing Cylinder Rotation: Frame of reference for specifying rotation is the clamp arm viewed from above during the clamping stroke. A right hand unit rotates clockwise and then clamps down; a left-hand unit rotates counter-clockwise and then clamps down.

Mounting Options



Model	ØD1	ØD2	H1	H2	H3	H4	H5	L1	M	M1	M2
89E20	[1.89] 48	[0.39] 10	[0.69] 17,5	[0.37] 9,5	[2.36] 60	[1.10] 28	[0.59] 15	[0.75] 19	M36X1,5	M5	M5
89E30	[2.52] 64	[0.47] 12	[0.63] 16	[0.43] 11	[2.72] 69	[0.98] 25	[0.67]	[0.89] 22,5	M42X1,5	M6	
89E40	[2.95] 75	[0.63] 16	[0.75] 19	[0.55] 14	[2.60] 66	[1.38] 35	17	[1.08] 27,5	M55X2	M8	G-1/8
89E50	[3.54] 90	[0.71] 18	[0.98] 25	[0.67] 17	[4.09] 104	[1.50]	[0.98] 25	[1.36] 34,5	M68X2	M10	
89E63	[4.13] 105	[0.79] 20	[1.06] 27	[0.75] 19	[3.03] 77	38	[0.79] 20	[1.57] 40	M80X2		G-1/4

Series 8000, 8200, 8400 Standard Clamp Dimensions



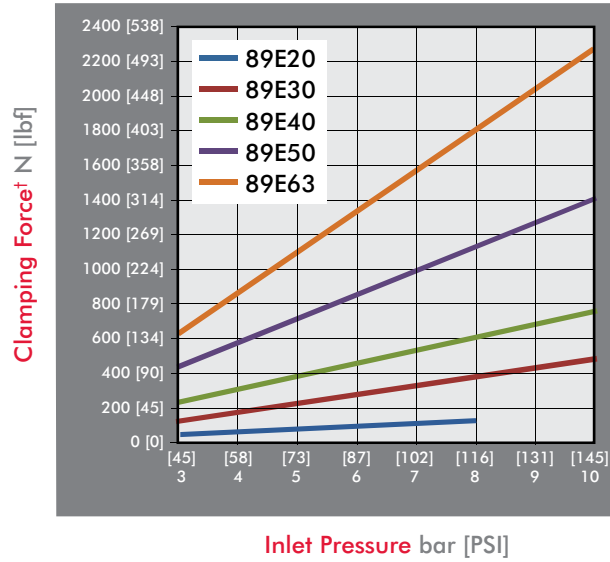
Swing Cylinder Rotation: Frame of reference for specifying rotation is the clamp arm viewed from above during the clamping stroke. A right hand unit rotates clockwise and then clamps down; a left-hand unit rotates counter-clockwise and then clamps down.

Model	ØD1	ØD2	ØD3	ØD4	H1	H2	H3	H4	H5	H6	L1	L2
8015	[1.25]	[0.44]	--	--	[0.53]	[0.41]	[2.87]	[0.50]	[0.75]	--	--	[1.12]
8016	31,8	11,1	--	--	13,5	10,4	72,9	12,7	19,1	--	--	28,4
8215	[3.00]		[0.28]	[2.66]	[0.97]	[0.81]	[3.36]			[0.25]	[1.16]	[2.00]
8216	76,2	[0.50]	7,1	67,6	24,6	20,6	85,3	[0.75]	[0.67]	6,4	29,5	50,8
		12,7	--	--				19,1	17	--	--	
8415	[2.13]		--	--	[0.94]	[0.78]	[3.17]			--	--	[1.56]
8416	54,1		--	--	23,9	19,8	80,5			--	--	39,6

Model	L3	L4	M	M1	M2	M3
8015	[0.31]	[0.62]	1-1/8-16	1/4-20	#10-32	#10-32
8016	7,9	15,7				
8215			2-1/4-12			
8216	[0.38]	[0.75]		5/16-18	1/8 NPT	3/8-16
	9,6	19,1	1-3/4-12			
8415						
8416						

Series 89E, 8000, 8200, 8400 Clamping Forces

Series 89E Clamping Force
(w/ standard clamping arm)



Series 8000, 8200, 8400 Clamping Force
(w/ standard clamping arm)

