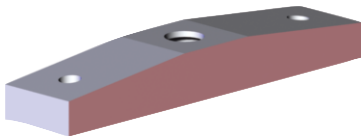


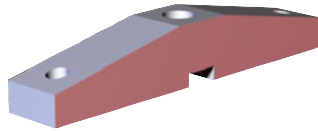
T-Style Clamping Arm

Features:

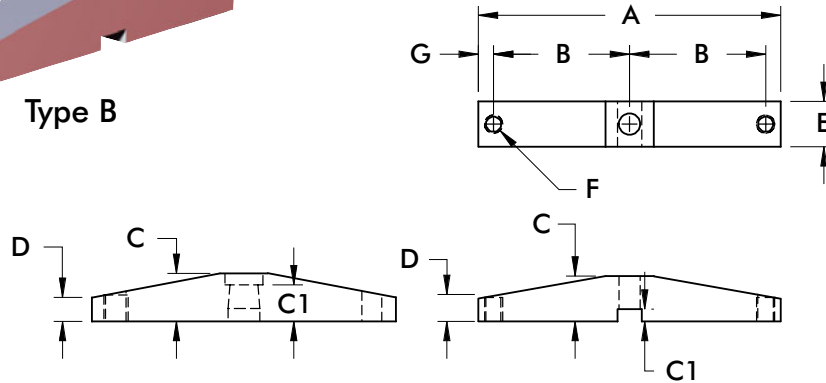
- For standard use
- Aluminum construction



Type A



Type B



Part Number	Type	Used with Model/series	A	B	C	C1	D	E	F	G	Weight [lbs] kg
801530	A	8015/8016	[2.88]	[1.12]	[0.39]	[0.33]	[0.27]	[0.62]	#10-32	[0.32]	[0.05]
		8115/8116	73.0	28.4	9.9	8.3	6.9	15.7		8.1	0.02
801531	A	8015/8016	[5.12]	[2.25]	[0.39]	[0.33]	[0.27]	[0.62]	#10-32	[0.32]	[0.09]
		8115/8116	130.0	57.2	9.9	8.3	6.9	15.7		8.1	0.04
821554	A	8215/8216	[4.75]	[2.00]	[0.75]	[0.57]	[0.37]	[0.75]	3/8-16	[0.37]	[0.07]
		8415/8416	120.7	50.8	19.1	14.5	9.4	19.1		9.4	0.03
		8315/8316									
821555	A	8215/8216	[6.75]	[3.00]	[0.75]	[0.57]	[0.37]	[0.75]	3/8-16	[0.37]	[0.10]
		8415/8416	171.5	76.2	19.1	14.5	9.4	19.1		9.4	0.05
		8315/8316									
952254	B	9522	[3.94]	[1.77]	[0.59]	[0.16]	[0.31]	[0.59]	M6	[0.20]	[0.10]
			100.0	45.0	15.0	4.0	8.0	15.0		5.0	0.05
952255	B	9522	[5.51]	[2.56]	[0.59]	[0.16]	[0.31]	[0.59]	M6	[0.20]	[0.14]
			140.0	65.0	15.0	4.0	8.0	15.0	5.0	0.06	
954054	B	9530/9540	[4.72]	[1.97]	[0.79]	[0.20]	[0.39]	[0.79]	M8	[0.39]	[0.08]
			120.0	50.0	20.0	5.0	10.0	20.0		10.0	0.04
954055	B	9530/9540	[7.09]	[3.15]	[0.79]	[0.20]	[0.39]	[0.79]	M8	[0.39]	[0.12]
			180.0	80.0	20.0	5.0	10.0	20.0	10.0	0.05	