

Series 800, 1200 Product Overview

Features:

- Low profile and compact for mounting in tight spaces
- Uniform clamping force throughout full stroke
- Accommodates variable workpiece thickness
- Single acting

Applications:

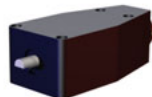
- Assembly
- Welding
- Light machining

How it Works:

1. Clamp arm retracts fully for loading and unloading.
2. Clamp arm moves straight forward.
3. Clamp arm pivots down to hold workpiece.

800
800-E

1200 ⓘ
1200-E ⓘ



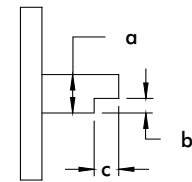
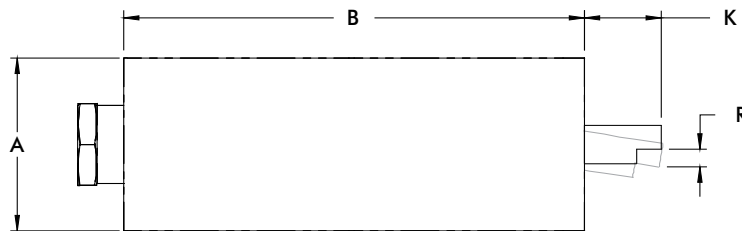
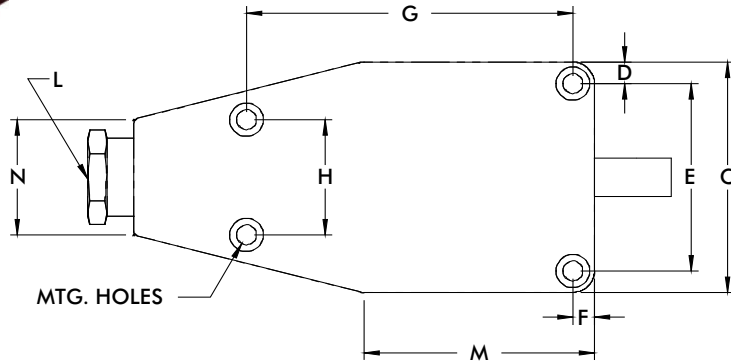
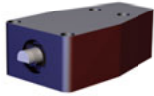
Series 800, 1200 Technical Information, Holding Capacities

Model	Inlet Pressure bar [PSI]	Exerting Force	Max. Pressure at Max. Mechanical Advantage† bar [PSI]	Clamping Range	Weight	Port Size
800	[70~150] 4,8~10,3	[850~1500 lbf] 3780~6670N	4,8 [70]	[0.09] 2,3	[2.50lb] 1,13kg	1/4 NPT
800-E		[650~1200 lbf] 2890~5340N		[0.16] 4,0		
1200 ⓘ		[750~1600 lbf] 3340~7120N		[0.25] 6,4	[4.00lb] 1,81kg	
1200-E ⓘ		[550~1200 lbf] 2450~5340N		[0.38] 9,6		

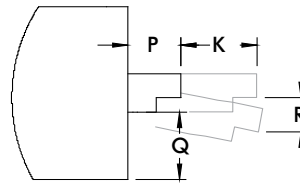
ⓘ This item is available upon request

Series 800, 1200 Standard Clamp Dimensions

800
800-E



Arm Configuration



Model E

Model	A	B	C	D	E	F	G	H	K	L	M	N	P	Q	R	MNTG HOLES
800	[1.63] 41,4	[4.81] 122,8	[2.72] 69,1	[0.25] 6,4	[2.21] 56,1	[0.25] 6,4	[3.13] 79,5	[1.19] 30,2	[0.50] 12,7		[2.31] 58,37	[1.50] 38,1	-	[0.59] 15,0	[0.09] 2,3	[0.26] 6,6
800-E										1/4 NPT			[0.50] 12,7		[0.16] 4,1	
1200	[2.25] 57,2	[6.00] 152,4	[3.00] 76,2	[0.28] 7,1	[2.44] 62	[0.28] 7,1	[4.25] 108	[1.50] 38,1	[1.00] 25,4		[3.00] 76,2	[1.38] 35,1	-	[0.63] 16	[0.25] 6,4	
1200-E													[0.69] 17,5		[0.38] 9,7	