

Series 817, 827 Product Overview

Features:

- Dual mounting surfaces for maximum flexibility
- Sensor ready for round or T-slot style sensors
- Built-in flow restriction eliminates need for external flow controls

Applications:

- Assembly
- Welding

Also Available:

See page 8.1 for spindle accessories  
See page 13.1 for sensing options

▲ 817-U  
■ 817-UE



▲ 817-S  
■ 817-SE



▲ 827-U  
■ 827-UE



▲ 827-S  
■ 827-SE



Series 817, 827 Technical Information, Holding Capacities, Mounting Options

Model	Maximum Holding Capacity		Max. Exerting Force @ 5bar [72PSI]		Weight	Port Size	Spindle Accessory (Supplied)
	Inner	Outer	Inner	Outer			
▲ 817-U	[375 lbf] 1670 N		[369 lbf] 1648 N		1,05kg [2.31lb]	1/8 NPT	507107 (Flanged Washers)
■ 817-UE		[200 lbf] 890 N		[225 lbf] 1005 N		G-1/8	225208-M (Spindle)
▲ 817-S	[450 lbf] 2000 N		[360 lbf] 1608 N		2,14kg [4.71lb]	1/8 NPT	207107 (Bolt Retainer)
■ 817-SE		[390 lbf] 1735 N		[491 lbf] 2200 N		G-1/8	235106 (Flanged Washers)
▲ 827-U	[600 lbf] 2670 N			[309 lbf] 1383 N	2,14kg [4.71lb]	1/8 NPT	240208-M (Spindle)
■ 827-UE		[330 lbf] 1470 N		[281 lbf] 1257 N		G-1/8	210114 (Bolt Retainer)
▲ 827-S	[700 lbf] 3110 N					1/8 NPT	
■ 827-SE						G-1/8	

See Technical Appendix Section for details. Preferred Market: ▲ NA ■ Europe/SA ● Global

**Max Cylinder Pressure:** 10bar [145psig]\*

**Max Operating Temp:** -10°C to 90°C [-14°F to 194°F]

**Replacement Seal Kit:** 817: 807450-32-1-00  
827: 810450-40-1-00

\*In no case should the inlet pressure be high enough to create an exerting force that exceed's the clamps' holding capacity.

**Sensor Accessories**

	Item Number
Round Reed Switch with Quick Disconnect	810169
T-slot Reed Switch with Quick Disconnect	8EA-109-1
Quick Disconnect 2M Extension Cable	CABL-010
Quick Disconnect 5M Extension Cable	CABL-013

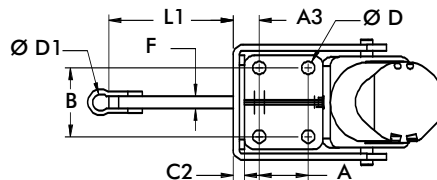
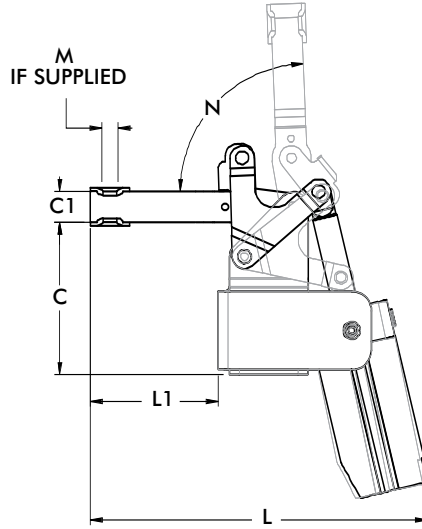
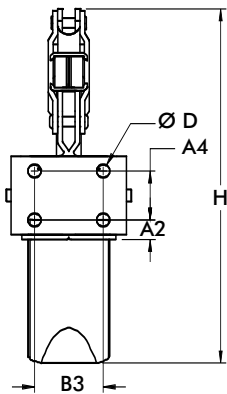
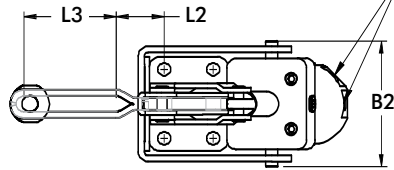
See Pneumatic Accessories section for more options

Series **817, 827** Standard Clamp Dimensions  
-U/-UE/-S/-SE

▲ **817-U**  
■ **817-UE**



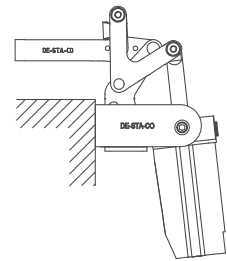
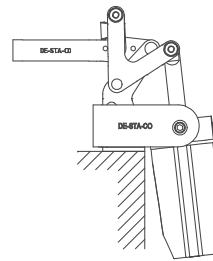
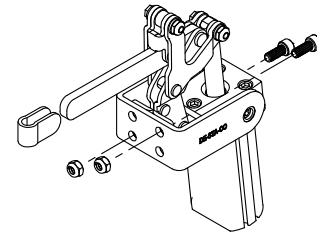
**817-U / 817-S / 827-U / 827-S** 1/8" NPT  
**817-UE / 817-SE / 827-UE / 827-SE** G-1/8



mm [INCH]  
THIRD ANGLE PROJECTION

**Mounting Options:**

Use two bolts in the "side" mounting holes, to secure mounting bracket, when "top" mounting.



Top Mounting

Side Mounting

Model	A	A2	A3	A4	B	B2	B3	C	C1	C2	C3	C4
<b>817-U</b>												
<b>817-UE</b>	[0.63]	[0.44]	[0.60]	[0.63]	[1.00]	[2.44]	[1.00]	[2.69]	[0.63]	[0.12]	[1.25]	[1.31]
<b>817-S</b>	16	11,2	15,1	16	25,4	62	25,4	68,3	16	3,1	31,8	33,3
<b>817-SE</b>												
<b>827-U</b>								[3.89]	[0.79]			[1.76]
<b>827-UE</b>	827-U	[1.25]	[0.50]	[0.66]	[1.25]	[1.76]	[3.20]	98,8	20	[0.12]	[2.00]	44,8
<b>827-S</b>		31,8	12,7	16,8	31,8	44,7	81,4	[3.91]	[0.75]	3,1	50,8	[1.78]
<b>827-SE</b>								99,2	19,1			45,3

Model	ØD	ØD1	F	H	L	L1	L2	L3	M	N
<b>817-U</b>					[6.24]	[2.37]	[0.19]	[1.90]		
<b>817-UE</b>	[0.27]	-	-	[7.51]	158,6	60,3	4,8	48,4	5/16	95°
<b>817-S</b>	6,7			190,7					M8	
<b>817-SE</b>		[0.34]	[0.25]		[6.97]	[3.04]	-	-		
<b>827-U</b>		8,7	6,4		175,5	77,2				
<b>827-UE</b>	[0.33]	-	-	[9.04]	[8.61]	[3.27]	[1.23]	[2.35]	3/8	88°
<b>827-S</b>	8,4			229,7	[8.49]	[3.18]			M10	
<b>827-SE</b>		[0.42]	[0.31]		215,6	80,7				