

Series 8021, 8071 Product Overview

Features:

- Enclosed clamp for dirty environments such as spot and MIG welding
- Non-pivoting cylinder can be hard-piped into fixtures
- Sensor ready for round or T-slot style sensors

Applications:

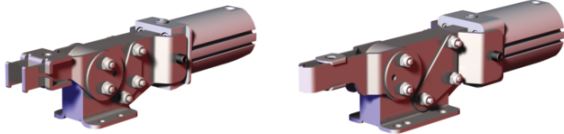
- Assembly
- Welding

Also Available:

See page 8.1 for spindle accessories  
See page 13.1 for sensing options

▲ 8021 ⓘ  
■ 8021-UE ⓘ

▲ 8071  
■ 8071-UE



Series 8021, 8071 Technical Information, Holding Capacities

Model	Maximum Holding Capacity		Max. Exerting Force @ 5bar [72PSI]		Weight	Port Size	Spindle Accessory (Supplied)
	Inner	Outer	Inner	Outer			
▲ 8021 ⓘ	[390 lbf]	[255 lbf]	[169 lbf]	[100 lbf]	[2.30lb]	1/8 NPT	8021122 (Flanged Washers)
■ 8021-UE ⓘ	1735 N	1135 N	760 N	449 N	1,04kg	G-1/8	
▲ 8071	[450 lbf]	[310 lbf]	[496 lbf]	[283 lbf]	[2.80lb]	1/8 NPT	507107 (Bolt Retainer)
■ 8071-UE	2000 N	1380 N	2218 N	1267 N	1,27kg	G-1/8	

See Technical Appendix Section for details. Preferred Market: ▲ NA ■ Europe/SA ● Global  
ⓘ This item is available upon request

**Max Cylinder Pressure:** 10bar [145psig]\*  
**Max Operating Temp:** -10°C to 90°C [-14°F to 194°F]  
**Replacement Seal Kit:** 8021: 802450-32-1-00  
8071: 810450-40-1-00

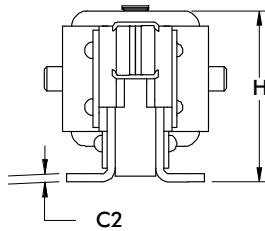
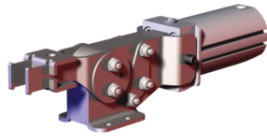
\*In no case should the inlet pressure be high enough to create an exerting force that exceed's the clamps' holding capacity.

Sensor Accessories	Item Number
Round Reed Switch with Quick Disconnect	810169
T-slot Reed Switch with Quick Disconnect	8EA-109-1
Quick Disconnect 2M Extension Cable	CABL-010
Quick Disconnect 5M Extension Cable	CABL-013

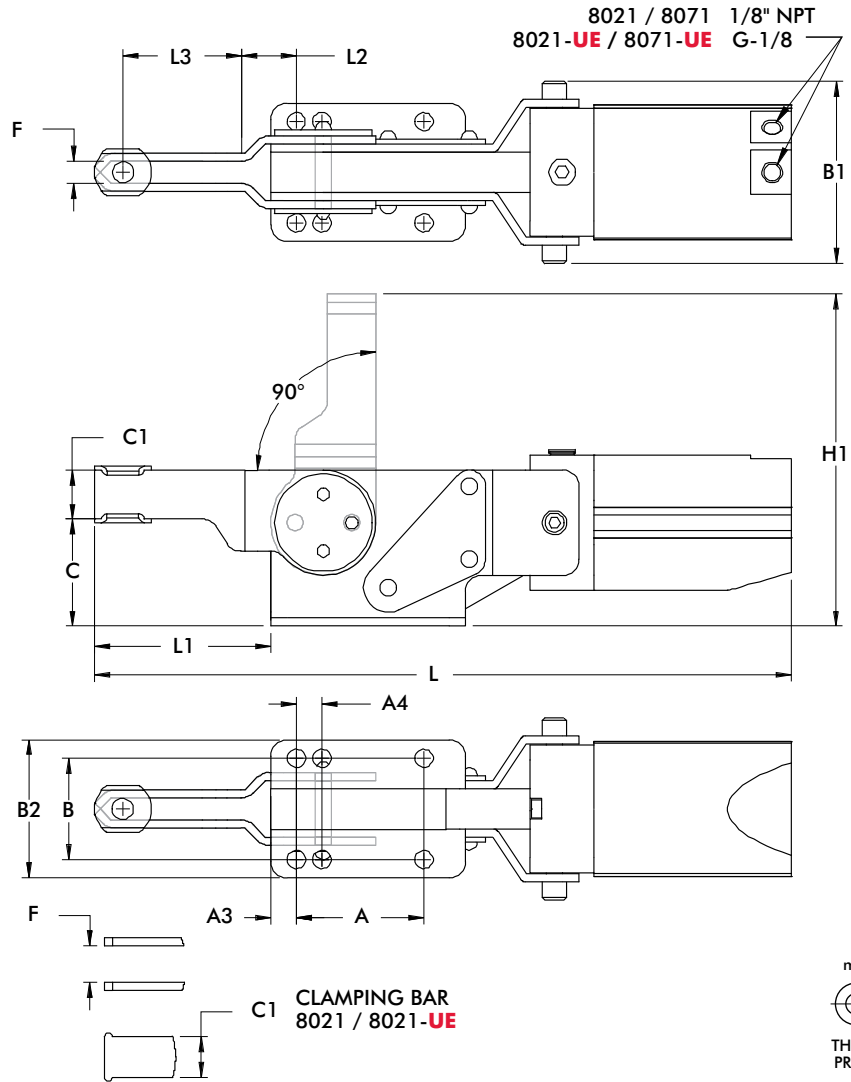
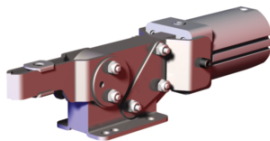
See Pneumatic Accessories section for more options

Series **8021, 8071** Standard Clamp Dimensions  
8021/8071/-UE

▲ 8021  
■ 8021-UE



▲ 8071  
■ 8071-UE



mm [INCH]  
THIRD ANGLE PROJECTION

Model	A	A1	A3	A4	B	B1	B2	C	C1	C2	ØD	F
<b>8021</b>	[0.79]	[1.97]	[0.47]	-	[1.50]	[2.26]	[1.88]	[1.56]	[0.63]	[0.13]	[0.21]	[0.56]
<b>8021-UE</b>	20	50	12	-	38,2	57,4	47,9	39,6	16	3,2	5,3	14,3
<b>8071</b>	[1.97]	[3.00]	[0.39]	[0.39]	[1.56]	[2.81]	[2.12]	[1.65]	[0.75]	[0.13]	[0.28]	[0.34]
<b>8071-UE</b>	50	76,2	10	10	39,7	71,4	53,9	41,9	19,1	3,2	7,1	8,7

Model	H	H1	L	L1	L2	L3	M
<b>8021</b>	[2.40]	[4.44]	[9.86]	[2.25]	[0.44]	[1.31]	1/4
<b>8021-UE</b>	60,9	112,8	250,4	57,2	11	33,2	M6
<b>8071</b>	[2.63]	[5.12]	[10.74]	[2.72]	[0.40]	[1.83]	5/16
<b>8071-UE</b>	66,9	130	272,9	69	10,1	46,5	M8