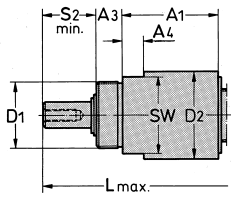




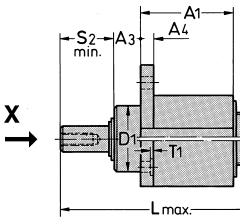
Two-hand operation (the plunger and the hand lever are operated separately)

Through hole mount

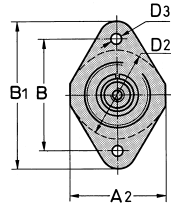


Part no. G-120/--

Flange mount

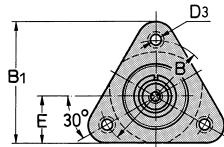


View "X"



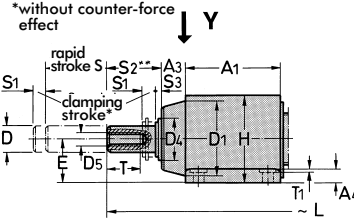
Part no. FL-120/--

View "X"

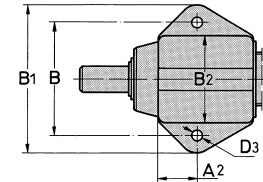


Part no. FL-160/--

Foot mount

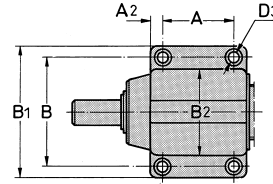


View "Y"

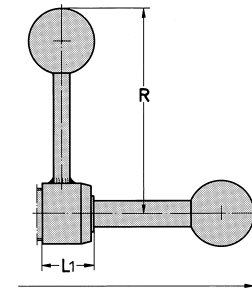


Part no. FO-120/--

View "Y"



Part no. FO-160/--
FO-220/--



Accessories (order separately)

Plunger

Part no. Ø length	For rapid stroke S	Weight ~ [lbs.] kg	For clamps
12/100	100	[0.30] 0,135	FO-120
12/200	200	[0.62] 0,280	FL-120
12/300	300	[0.82] 0,370	G-120
16/100F	100	[0.88] 0,400	FO-160
16/200F	200	[1.10] 0,500	FL-160
16/300F*	300	[1.54] 0,700	
22/100	100	[2.20] 1,000	
22/200	200	[2.40] 1,090	FO-220
22/300	300	[3.06] 1,390	

Important

The straight-line clamps are designed only for **axial load**. In case of side load, we recommend an additional radial support of the plunger.

Mounting type	Part no. without plunger	Available rapid strokes S (order plunger separately)	A	A1	A2	A3	A4	A8	B	B1	B2	Dh8	D1	D2	D3	D4
Foot mount	FO-120	100, 200, 300	-	44	19	12	6,3	8,5	52	68	40	12	35	-	6,5	20
	FO-160	100, 200, 300	40	62	11	12	12	10	70	90	52	16	46	-	9	25
	FO-220	100, 200, 300	50	75	13	20	15	12	90	115	69	22	60	-	11	36
Flange mount	FL-120	100, 200, 300	-	44	44	12	6	8,5	52	68	-	12	30f7	40	6,5	20
	FL-160	100, 200, 300	-	60	-	14	14	10	68	73	-	16	40f7	52	9	25
Through hole mount	G-120	100, 200, 300	-	44	-	12	10	8.5	-	-	-	12	M30x1,5	40	-	20

Mounting type	Part no. without plunger	D5	D9	D10	E	E1	H	L with rapid strokes:			L1	R	S2	S3	SW	SW1	T	T1	T3
								~	100	200									
Foot mount	FO-120	M6	30	6	20	12,5	42	228	328	428	24	95	2,5	2,5	-	11	12	-	10
	FO-160	M8	35	8	30	14,8	58	280	380	480	33	130	3	3	-	13	15	1	14
	FO-220	M12	40	9,5	35	19,5	71	295	395	495	35	197	3	3	-	17	25	1	18
Flange mount	FL-120	M6	30	6	-	12,5	-	228	328	428	24	95	2,5	2,5	-	11	12	-	10
	FL-160	M8	35	8	28	14,8	-	280	380	480	33	130	3	3	-	13	15	1	14
Through hole mount	G-120	M6	30	6	-	12,5	-	228	328	428	24	95	2,5	2,5	35	11	12	-	12