

Series 210 Product Overview

Features:

- DE-STA-CO® Toggle Lock Plus versions available
- Available in stainless steel
- Accommodates M10 or 3/8 spindle accessories

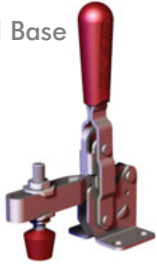
Applications:

- Assembly & test
- Light machining
- Light welding

Also Available:

See page 8.1 for accessories
 810-U Pneumatic Toggle Clamp
 (See page 10.9)
 810-S Pneumatic Toggle Clamp
 (See page 10.9)

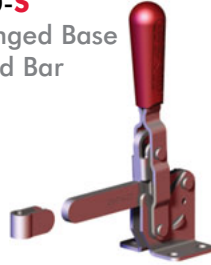
210-U
Flanged Base
U-Bar



210-USS
Flanged Base
U-bar, Stainless
Steel



210-S
Flanged Base
Solid Bar



210-UB
Straight Base
U-bar



210-SB
Straight Base,
Solid Bar



210-UR
Flanged Base
U Bar
with
DE-STA-CO®
Toggle Lock
Plus



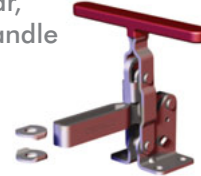
210-SR
Flanged Base
Solid Bar
with
DE-STA-CO®
Toggle Lock
Plus



210-UBR ⓘ
Straight Base
U Bar
with
DE-STA-CO®
Toggle Lock
Plus



210-TU
Flanged Base
U Bar,
T-Handle



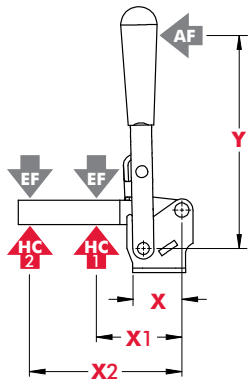
Note:
Clamps shown with included accessories.

Series 210 Technical Information

| Model | Max. Holding Capacity | Clamp Bar Opening (+10°) | Handle Opening (+10°) | Weight | Accessories (Supplied) | | |
|------------------|-----------------------|--------------------------|-----------------------|------------------|------------------------|------------------|-----------------|
| | | | | | Bolt Retainer | Spindle Assembly | Flanged Washers |
| 210-U | 2670 N [600 lbf] | 103° | 58° | 0,59kg [1.29lbs] | --- | 240208-M | 235106 |
| 210-USS | 3340 N [750 lbf] | | | | --- | 237943 | 235906 |
| 210-S | 3340 N [750 lbf] | | | | 210114 | --- | --- |
| 210-UB | 2670 N [600 lbf] | | | --- | 240208-M | 235106 | |
| 210-SB | 3340 N [750 lbf] | | | 210114 | --- | --- | |
| 210-UR | 2670 N [600 lbf] | | | --- | 240208-M | 235106 | |
| 210-SR | 3340 N [750 lbf] | | | 210114 | --- | --- | |
| 210-UBR ⓘ | 2670 N [600 lbf] | | | --- | 240208-M | 235106 | |
| 210-TU | 2670 N [600 lbf] | | | --- | --- | | |

ⓘ This item is available upon request

Series 210 Holding Capacities



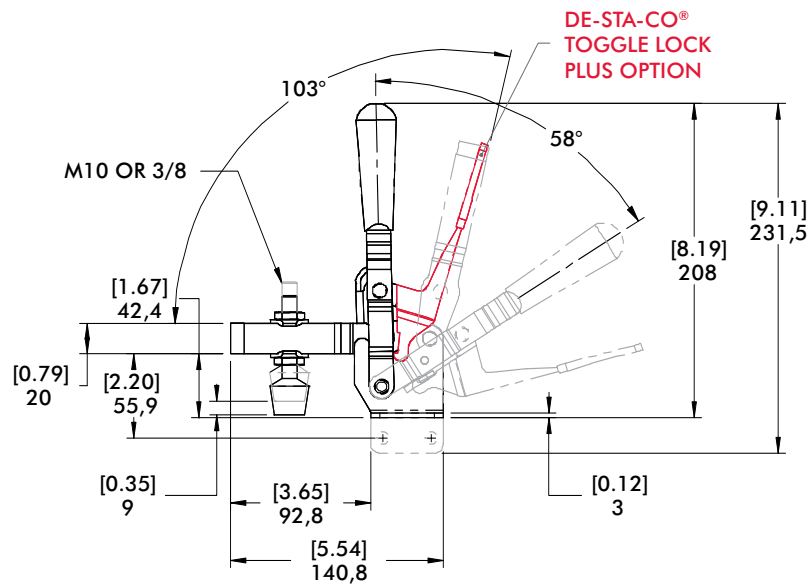
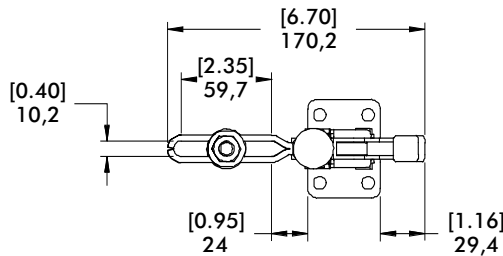
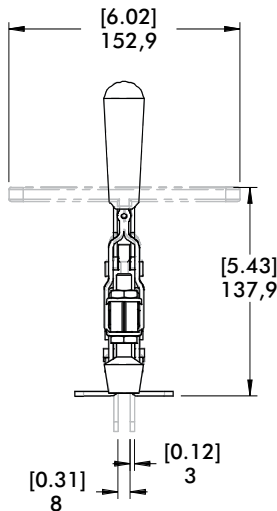
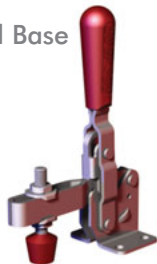
| Model | X | X1 | X2 | Y | ±HC1 | ±HC2 | ±EF(X1):AF | EF(X2):AF |
|---------------------------|--------------|----------------|---------------|-----------------|--------------------|--------------------|------------|-----------|
| U/UB/ UR/UBR ⓘ | [1.54] 39 | [2.38] 60,5 | [4.88] 124 | [6.75] 171,5 | [600lbf.] 2670N | [290lbf.] 1290N | 14:1 | 7:1 |
| USS | | [3.62] 92,0 | [5.25] 133 | [4.50] | [750lbf.] 3340N | [360lbf.] 1600N | | |
| S/SR/SB | | [2.38] 60,5 | [4.88] 124 | 114,5 | [600lbf.] 2670N | [290lbf.] 1290N | 11:1 | 9:1 |
| TU | | [2.38] 60,5 | [4.88] 124 | | [600lbf.] 2670N | [290lbf.] 1290N | | |

Dimensions shown "mm [inch]" ± HC = Holding Capacity, EF = Exerting Force, AF = Applied Force
 Refer to page 20.4 for additional information. ⓘ This item is available upon request

Series 210 Standard Clamp Dimensions
 -U/-USS/-S/-UB/-SB/-UR/-SR/-UBR/-TU

210-U^t

Flanged Base
U-Bar



210-SR

Flanged Base
Solid Bar
with
DE-STA-CO®
Toggle Lock
Plus

