

Series 210 Product Overview

Features:

- DE-STA-CO® Toggle Lock Plus versions available
- Available in stainless steel
- Accommodates M10 or 3/8 spindle accessories

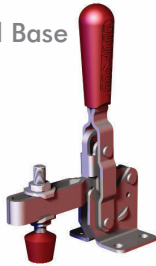
Applications:

- Assembly & test
- Light machining
- Light welding

Also Available:

See page 8.1 for accessories
 810-U Pneumatic Toggle Clamp
 (See page 10.9)
 810-S Pneumatic Toggle Clamp
 (See page 10.9)

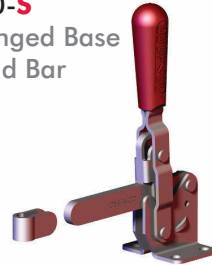
210-U[†]
 Flanged Base
 U-Bar



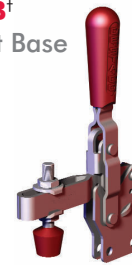
210-USS
 Flanged Base
 U-bar, Stainless
 Steel



210-S
 Flanged Base
 Solid Bar



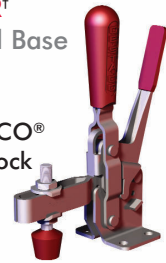
210-UB[†]
 Straight Base
 U-bar



210-SB
 Straight Base,
 Solid Bar



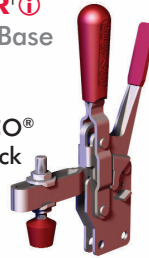
210-UR[†]
 Flanged Base
 U Bar
 with
 DE-STA-CO®
 Toggle Lock
 Plus



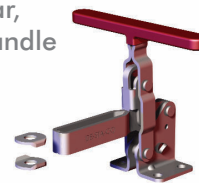
210-SR
 Flanged Base
 Solid Bar
 with
 DE-STA-CO®
 Toggle Lock
 Plus



210-UBR[†]Ⓢ
 Straight Base
 U Bar
 with
 DE-STA-CO®
 Toggle Lock
 Plus



210-TU
 Flanged Base
 U Bar,
 T-Handle



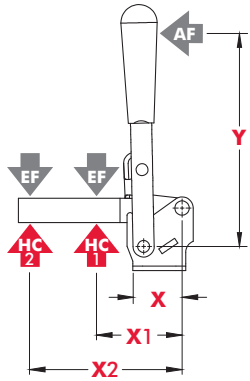
Note:
 Clamps shown with included accessories. [†]To order without spindle, add (-LS) to the end of model (Ex: 210-U-LS)

Series 210 Technical Information

Model	Max. Holding Capacity	Clamp Bar Opening (+10°)	Handle Opening (+10°)	Weight	Accessories (Supplied)		
					Bolt Retainer	Spindle Assembly	Flanged Washers
210-U	2670 N [600 lbf]	103°	58°	0,59kg [1.29lbs]	---	240208-M	235106
210-USS	3340 N [750 lbf]				---	237943	235906
210-S	3340 N [750 lbf]				210114	---	---
210-UB	2670 N [600 lbf]			---	240208-M	235106	
210-SB	3340 N [750 lbf]			210114	---	---	
210-UR	2670 N [600 lbf]			---	240208-M	235106	
210-SR	3340 N [750 lbf]			210114	---	---	
210-UBR[†]Ⓢ	2670 N [600 lbf]			---	240208-M	235106	
210-TU	2670 N [600 lbf]			---	---	---	
				0,62kg [1.36lbs]			

Ⓢ This item is available upon request

Series 210 Holding Capacities

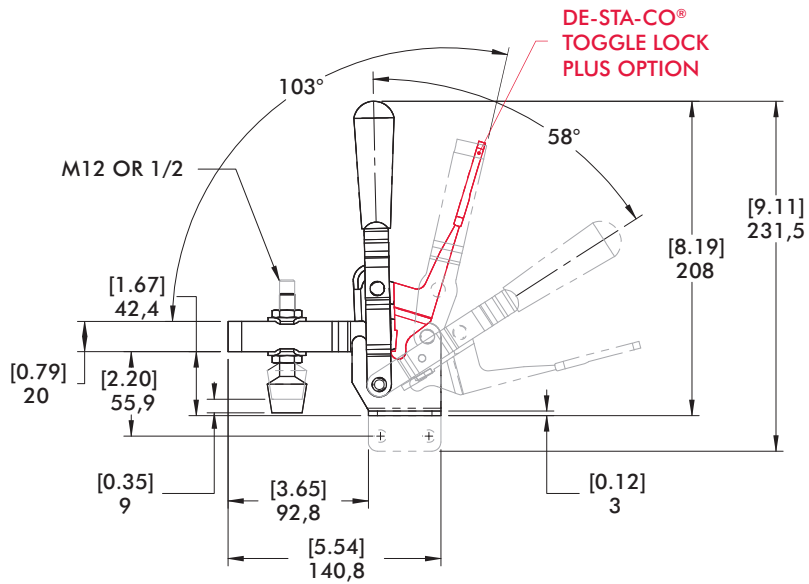
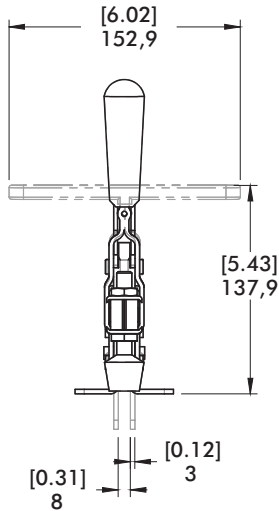
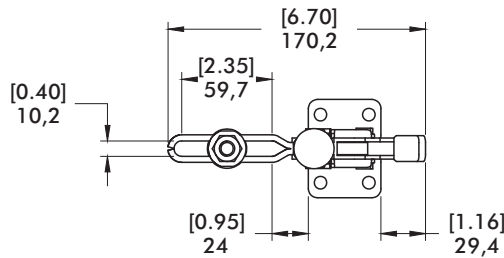
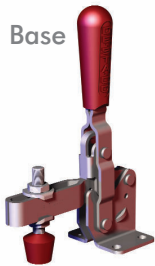


Model	X	X1	X2	Y	±HC1	±HC2	±EF(X1):AF	EF(X2):AF
U/UB/ UR/UBR ⓘ	[1.54] 39	[2.38] 60,5	[4.88] 124	[6.75] 171,5	[600lbf.] 2670N	[290lbf.] 1290N	14:1	7:1
USS					[750lbf.] 3340N	[360lbf.] 1600N		
S/SR/SB		[3.62] 92,0	[5.25] 133	[4.50]	[750lbf.] 3340N	[500lbf.] 2220N	11:1	9:1
TU		[2.38] 60,5	[4.88] 124	114,5	[600lbf.] 2670N	[290lbf.] 1290N		

Dimensions shown "mm [inch]" ± HC = Holding Capacity, EF = Exerting Force, AF = Applied Force
Refer to page 20.5 for additional information. ⓘ This item is available upon request

Series 210 Standard Clamp Dimensions
-U/-USS/-S/-UB/-SB/-UR/-SR/-UBR/-TU

210-U[†]
Flanged Base
U-Bar



210-SR
Flanged Base
Solid Bar
with
DE-STA-CO®
Toggle Lock
Plus

